

# BULIM SQUARE

MANUFACTURING  
REIMAGINED

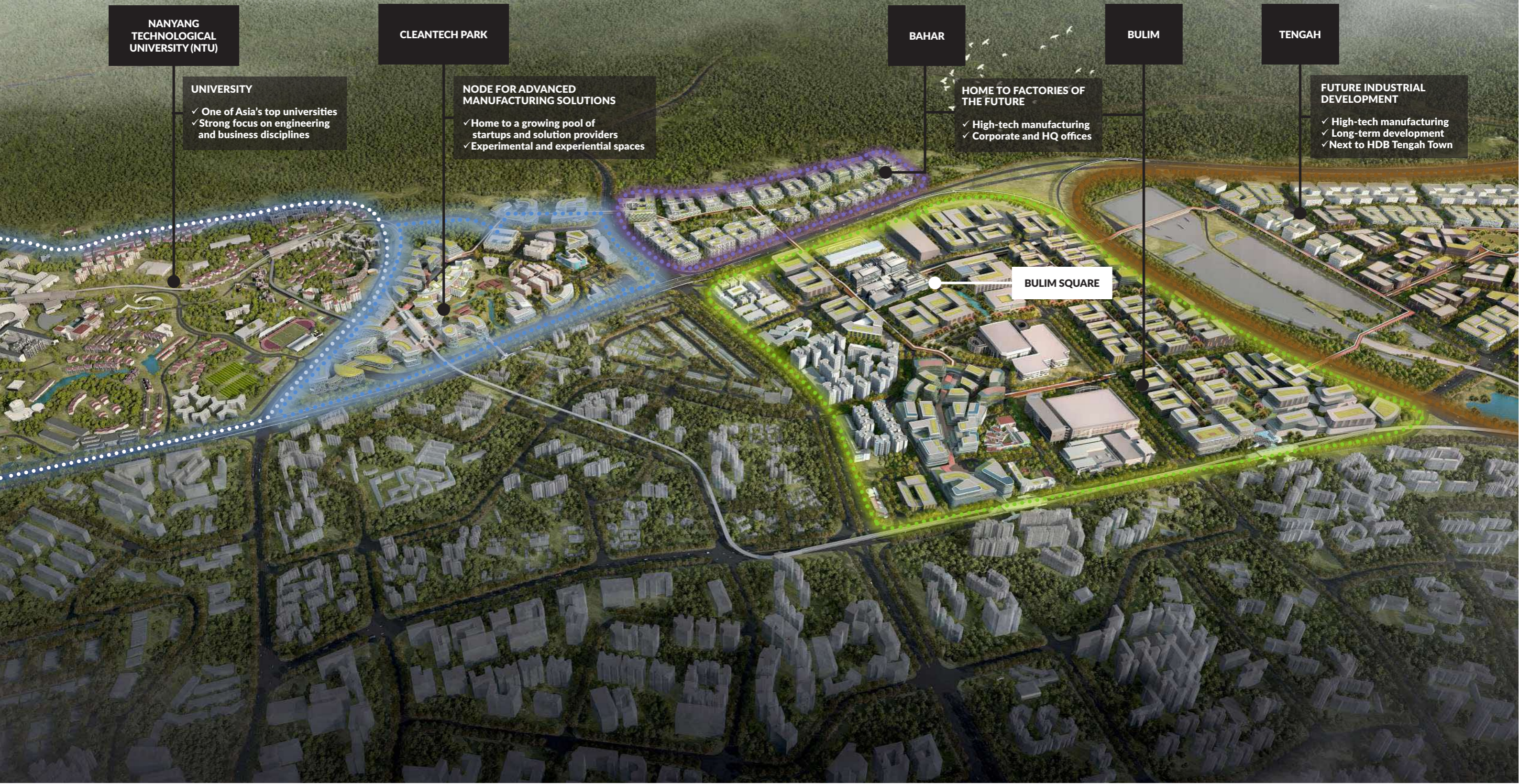


BUILDING INDUSTRIES

# JURONG INNOVATION DISTRICT

Developed by JTC, Jurong Innovation District (JID) is Asia's leading advanced manufacturing hub. It is a 600-hectare district located along Singapore's western manufacturing belt. With a ready ecosystem of advanced manufacturers, researchers, technology and training providers, our community is still expanding.

Bulim Square is nestled within JID's Bulim district. Home to Industry 4.0 champions, the precincts will feature integrated infrastructure and a dedicated underground logistics network to meet the business needs of next-generation industrialists.



NANYANG  
TECHNOLOGICAL  
UNIVERSITY (NTU)

UNIVERSITY  
✓ One of Asia's top universities  
✓ Strong focus on engineering and business disciplines

CLEANTECH PARK

NODE FOR ADVANCED  
MANUFACTURING SOLUTIONS  
✓ Home to a growing pool of startups and solution providers  
✓ Experimental and experiential spaces

BAHAR

HOME TO FACTORIES OF  
THE FUTURE  
✓ High-tech manufacturing  
✓ Corporate and HQ offices

BULIM

BULIM SQUARE

TENGH

FUTURE INDUSTRIAL  
DEVELOPMENT  
✓ High-tech manufacturing  
✓ Long-term development  
✓ Next to HDB Tengah Town

# BULIM SQUARE

Turn your advanced manufacturing vision into reality, right here in the city-state of Singapore, at the heart of Southeast Asia. Nestled in the vibrant ecosystem of innovators, researchers, and creators, Bulim Square reimagines manufacturing like no other.

From R&D and prototyping to production and distribution, Bulim Square welcomes your full suite of operational and HQ functions in one location. Together with the district's integrated logistics infrastructure, high-specification spaces, and proximity to research and academic institutions, you can now embrace emerging technologies and push innovative frontiers for your business.



# INNOVATIVE FEATURES, AWARD-WINNING EXCELLENCE

Bulim Square stands as a paragon of innovative, sustainable design in Singapore's urban landscape. The award-winning development integrates green technologies with user-centric features, earning prestigious accolades like the Building & Construction Authority's (BCA) Universal Design Award GoldPLUS and Green Mark Platinum certification. From its state-of-the-art district cooling system to its commitment to green coverage, Bulim Square sets new standards for inclusive, efficient, and sustainable workspaces.



## UNIVERSAL DESIGN AWARD - GOLD PLUS

Bulim Square has achieved the BCA Universal Design Award GoldPLUS. The award recognises Bulim Square's commitment to creating an inclusive and accessible environment. This accolade also highlights the development's innovative design features that cater to users of all ages and abilities, ensuring a seamless experience throughout the premises.

## GREENMARK PLATINUM



Bulim Square has also attained the BCA Green Mark Platinum certification, the highest accolade for environmental sustainability in Singapore's built environment. This achievement underscores the development's commitment to energy efficiency, water conservation, and eco-friendly design, ensuring a greener future for the occupants and the community.

## GREEN FEATURES

Bulim Square incorporates sustainable design elements, including rainwater harvesting for landscape irrigation and a commitment to 40% green coverage. The development features an innovative Elevated Air Movement Elevated Temperature (EAMAT) system for enhanced energy efficiency and is designed with photovoltaic readiness to support future solar energy adoption.

## DISTRICT COOLING SYSTEM

Integrated with a state-of-the-art district cooling system, Bulim Square leverages centralised chilled water production to efficiently cool multiple buildings across the estate. This approach not only reduces overall cooling costs through economies of scale but also improves energy efficiency, resulting in lower carbon emissions and a more sustainable environment for all occupants.

## HUB PARKING

Bulim Square's hub parking system is part of a strategy to distribute shared parking spaces to maximise park-and-ride opportunities in JID. The system aims to facilitate seamless park-and-ride experiences and reduce the need for multiple car parks, aligning with JID's car-lite vision and promoting a more efficient, sustainable urban environment.

## SKY CORRIDOR PLAZA

This pedestrian-friendly space is connected to the 1.1km-long Sky Corridor which offers a seamless, car-free environment that serves as a vibrant hub for community activities. The Sky Corridor Plaza also enhances connectivity and promotes sustainable transportation modes such as walking and cycling, fostering a healthier and more active lifestyle for all users.

## END OF TRIP FACILITIES

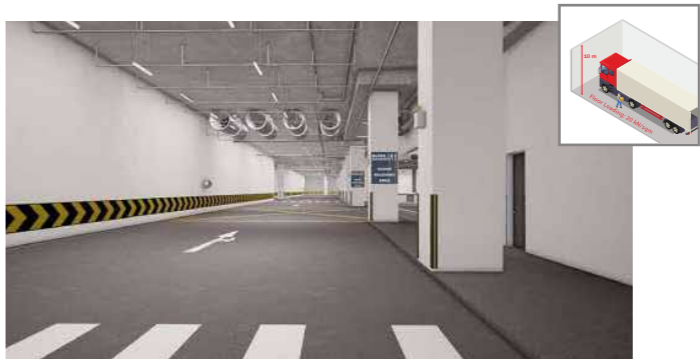
Bulim Square offers end-of-trip facilities that are designed to support and encourage active commuting. These amenities include bicycle parking spots, shower and changing rooms, and personal lockers, providing cyclists and other active commuters with a seamless transition from their journey to their workday.

## PNEUMATIC WASTE CONVEYANCE SYSTEM

The Pneumatic Waste Conveyance System (PWCS) at Bulim Square aims to make waste management easier. It utilises a network of pipes to collect and transport waste from multiple collection points to a centralised location, eliminating the need for manual waste handling. By enhancing hygiene, reducing odours, and minimising the presence of collection vehicles, the PWCS improves the overall cleanliness and operational efficiency of the estate.



# THE POWER TO FUTURE-PROOF YOUR BUSINESS



## UNDERGROUND DISTRICT LOGISTICS NETWORK (DLN)

Bulim Square will be integrated with Singapore's first underground District Logistics Network, which allows goods to flow faster without heavy vehicles causing traffic congestion on roads.



## DESIGNATED AUTOMATED GUIDED VEHICLES (AGV) NETWORK

An extension of the underground DLN is dedicated AGV corridors and AGV-ready cargo lifts that will connect your units with the goods receiving area in the basement, offering a seamless automated logistics chain right to your doorstep.



## HIGH TECHNICAL SPECIFICATIONS

Designed with high power and floor loading provisions and varying floor-to-floor heights, the spaces in the development support a wide range of industrial activities, from R&D and prototyping to production and distribution.



## SECURITY FEATURES

A secured access system combining a gantry system's efficiency and a card access system's precision has been implemented within Bulim Square, to ensure both seamless entry and optimum security for occupants.



# SPACES THAT SPARK CONNECTIONS

With a variety of community and event spaces in Bulim Square, there are abundant opportunities to share knowledge, expand your business networks, and foster new strategic partnerships.



Welcome centre



Outdoor event plaza



Main plaza pavillion

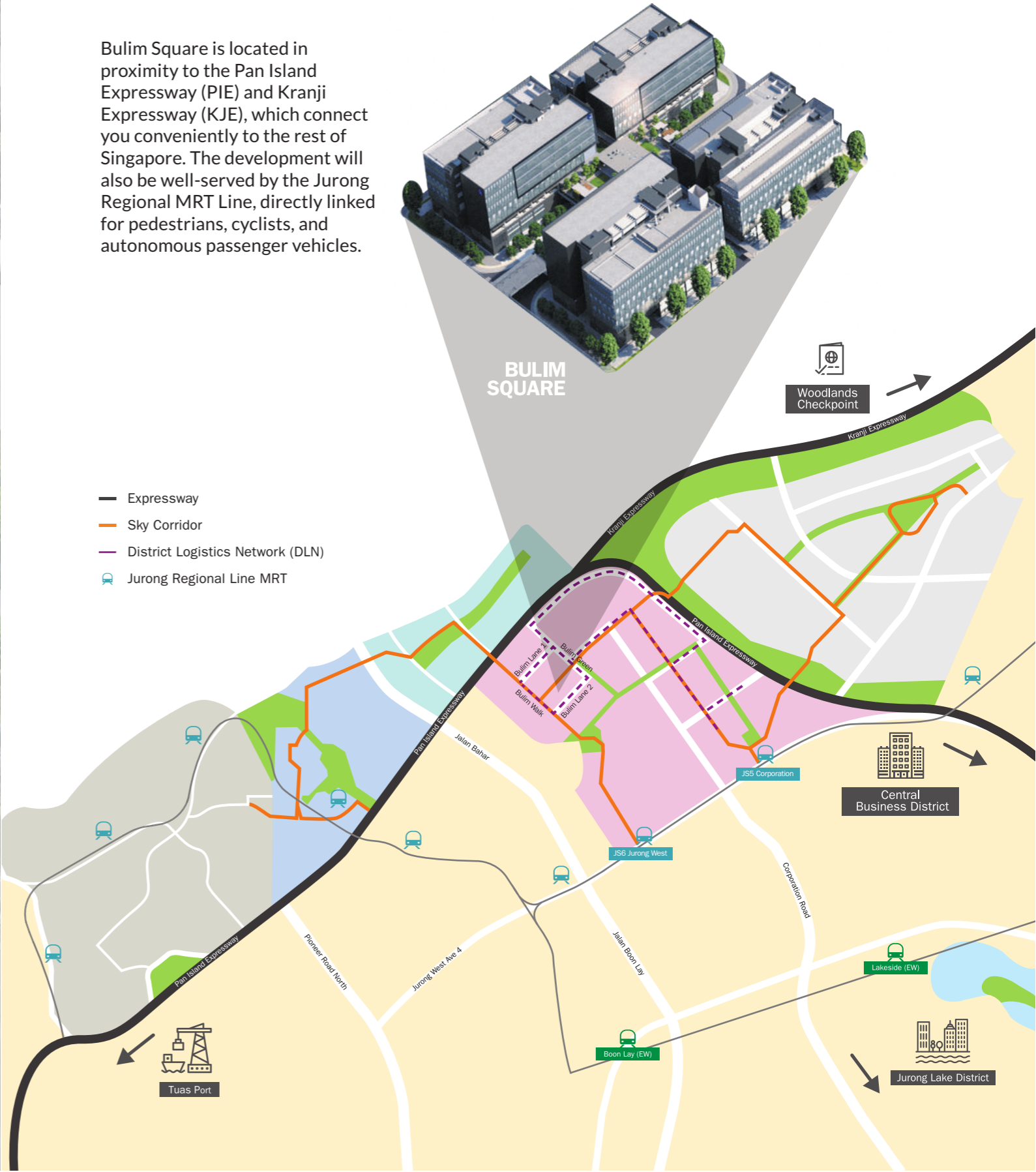


F&B options and amenities



# MOVING IN AND AROUND BULIM SQUARE

Bulim Square is located in proximity to the Pan Island Expressway (PIE) and Kranji Expressway (KJE), which connect you conveniently to the rest of Singapore. The development will also be well-served by the Jurong Regional MRT Line, directly linked for pedestrians, cyclists, and autonomous passenger vehicles.



# TECHNICAL SPECIFICATION

Zoning	Business 2
Site Area (ha)	4.5
Gross Floor Area (sqm)	161,000
No. of Levels	Tower 1 & 2: 6 Levels Tower 3 & 4: 5 Levels
No. of Units	Factory & Warehouse: 180 Office: 7 F&B (including vending machine): 7 Gym: 1 Pharmacy: 1
Production Floor Loading (kN/sqm)	Basement 2 & Level 1: 20 Level 2 & 3: 15 Level 4, 5 & 6: 10
Ceiling Heights (m)	Basement 2: 6m* Level 1: 10m* Level 2 & 3: 6m* Level 4 & 5: 4.8m*
Lifts	Goods Lift Car Dimension: 2.7m (H) x 3.5m (D) x 2.4m (W) Goods Door Lift Dimension: 2.5m (H) x 2m (W) 4 Goods Lifts per Tower: 3000kg 4 Passenger / Fireman's Lifts per Tower: 1630kg
Carpark	Total no. of Carpark Lots: 841 No. of Accessibility Carpark Lots: 19 No. of Family Carpark Lots: 8 No. of Motorcycle Lots: 176 EV Charging available

\*Clear height: floor finished level to underside of beam

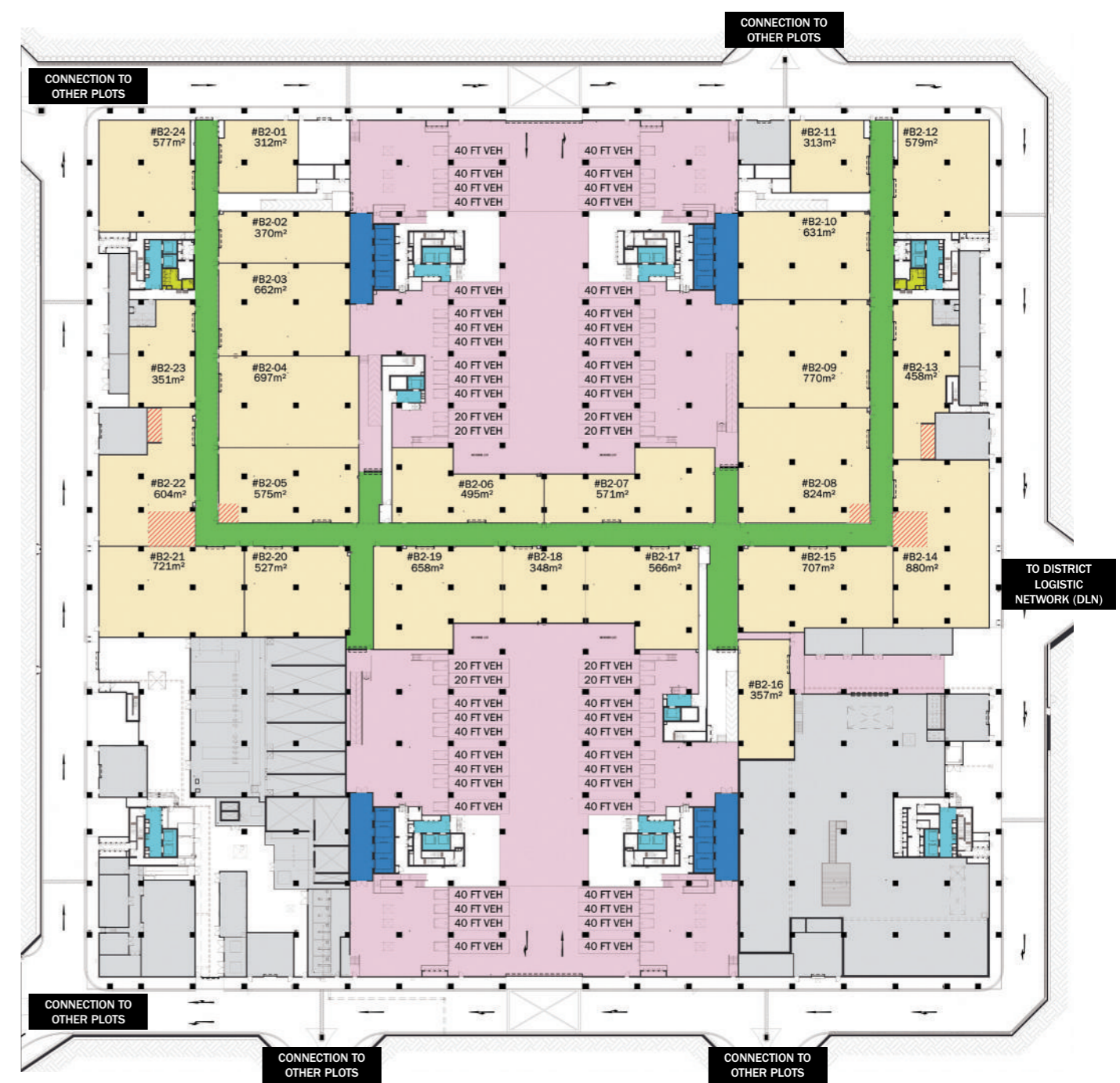


# OVERALL FLOOR PLANS



# OVERALL FLOOR PLANS

## BASEMENT 2



Floor loading of factory units: **20kN/sqm**  
Clear height of factory units: **6m\***

\* Clear height : floor finished level to underside of beam

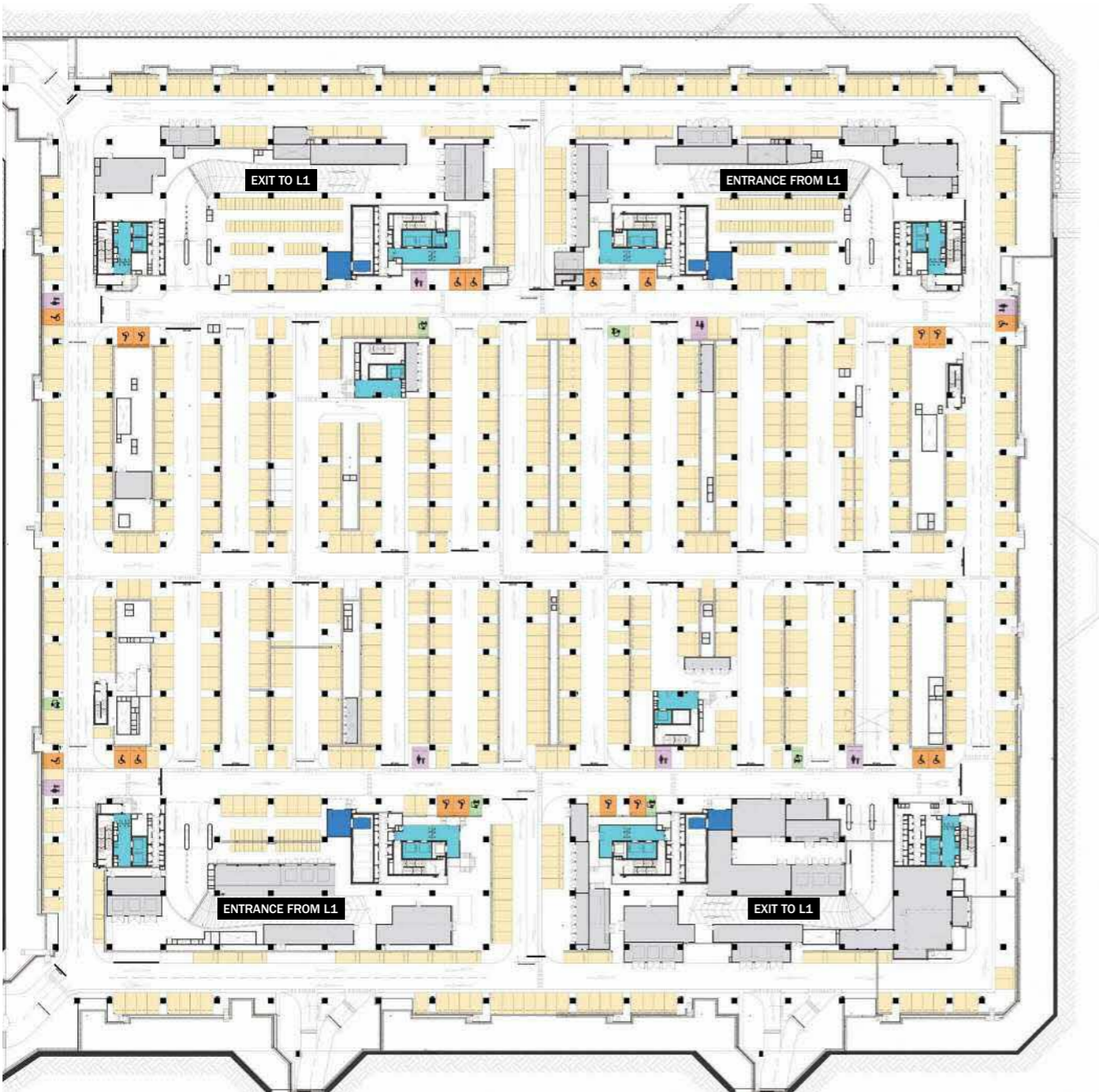
The plans are subject to change as may be approved by relevant authorities. All GFA listed are approximate measurements only and are subject to final survey. Localised lower headroom in units with double slab.



- Factory Units
- Corridor
- Goods Lift Lobby
- Passenger Lift Lobby
- Loading & Unloading Bay
- Other Spaces (Non-leasable)
- Washrooms
- Reduced Headroom Area

# OVERALL FLOOR PLANS

## BASEMENT 1



Total no. of carpark lots: **841**  
No. of accessibility carpark lots: **19**  
No. of family carpark lots: **8**  
No. of motorcycle lots: **176**

\* Clear height : floor finished level to underside of beam

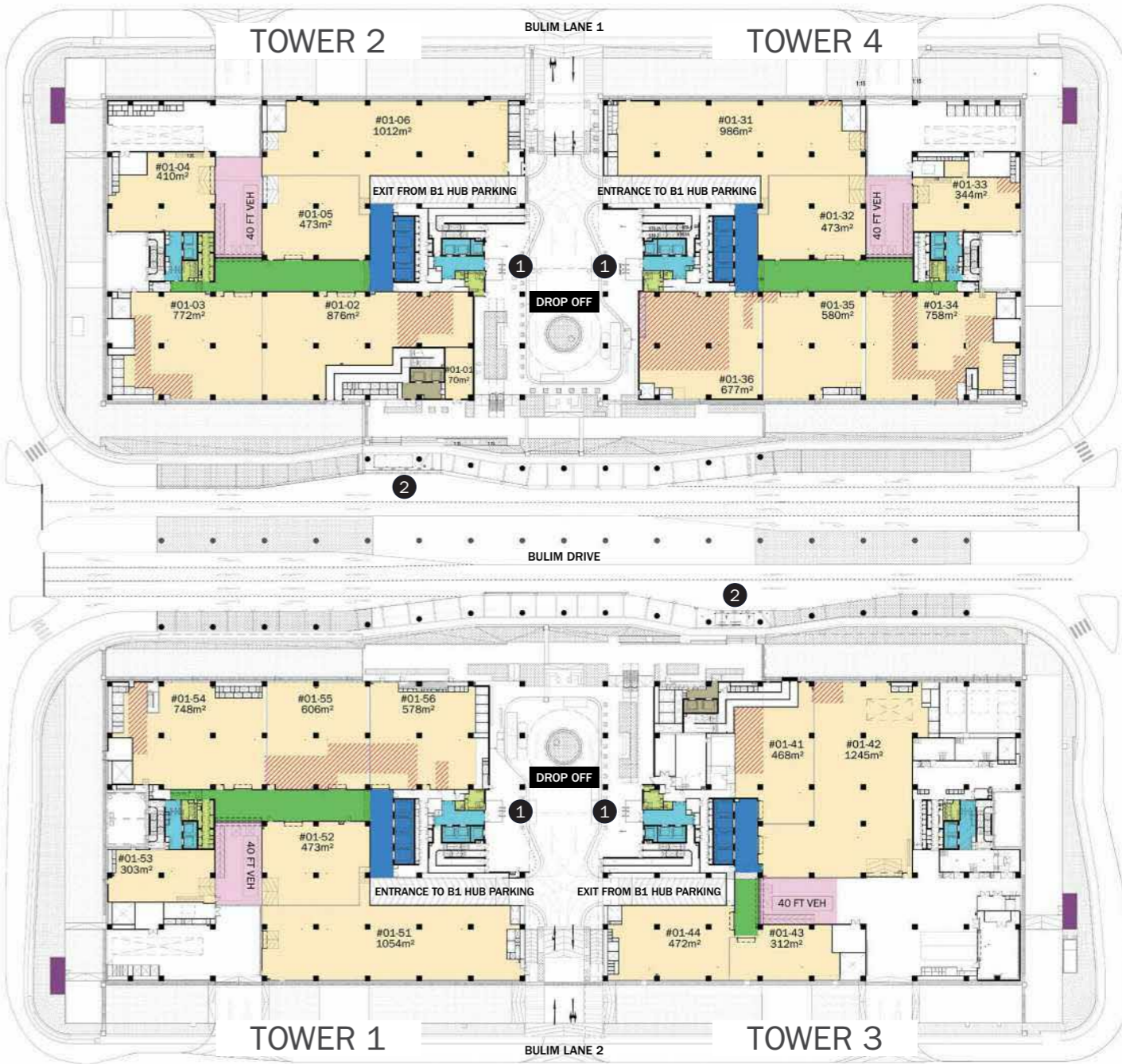
The plans are subject to change as may be approved by relevant authorities. All GFA listed are approximate measurements only and are subject to final survey. Localised lower headroom in units with double slab.



- Goods Lift Lobby
- Passenger Lift Lobby
- Other Spaces (Non-leasable)
- Carpark Lots
- Wheelchair Accessible Lots
- Family Lots
- Provisional Electric Vehicle Lots

# OVERALL FLOOR PLANS

## LEVEL 1



Floor loading of factory units: **20kN/sqm**  
Clear height of factory units: **10m\***

\* Clear height : floor finished level to underside of beam

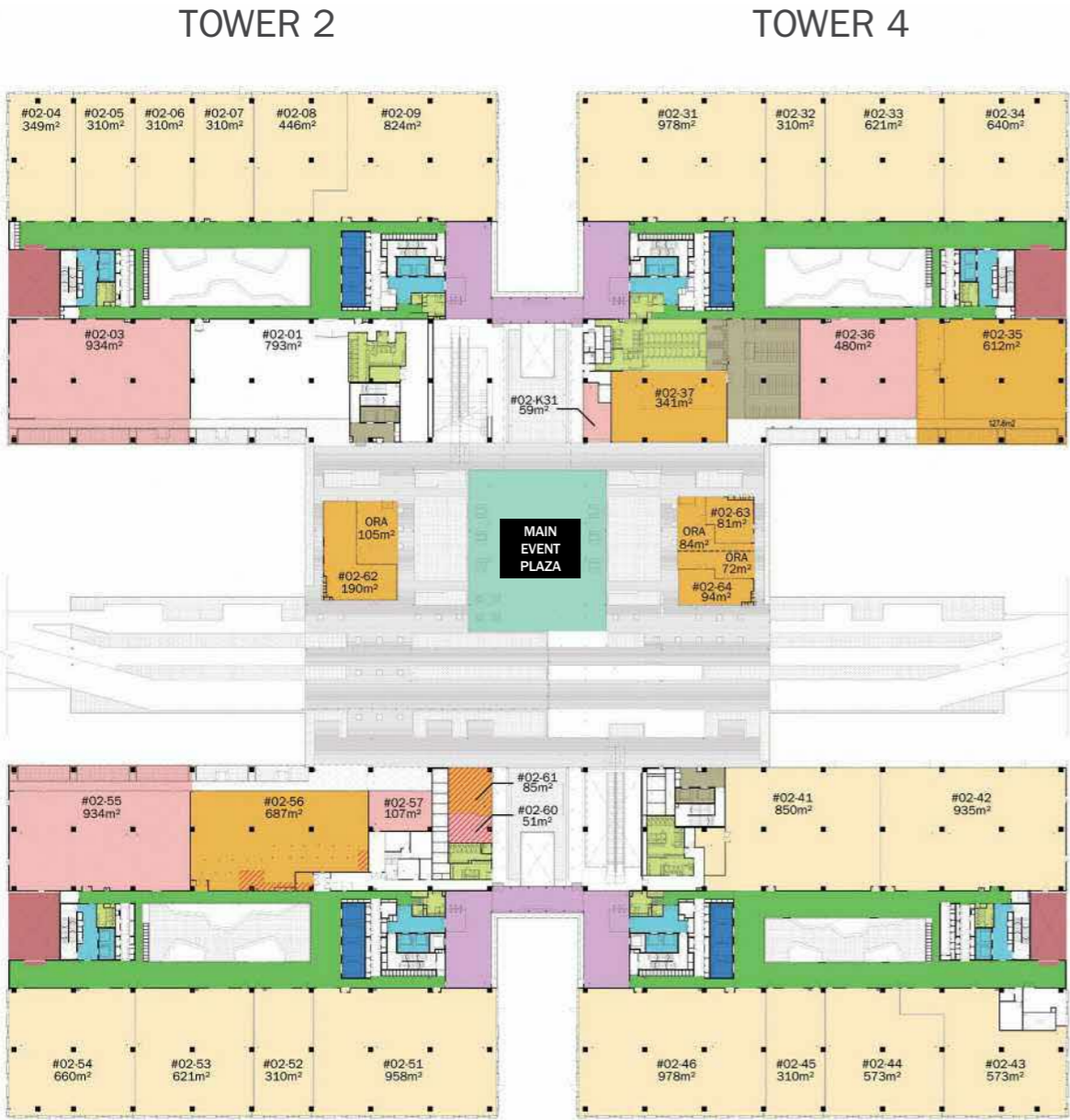
The plans are subject to change as may be approved by relevant authorities. All GFA listed are approximate measurements only and are subject to final survey. Localised lower headroom in units with double slab.



- Factory Units
- Corridor
- Goods Lift Lobby
- Passenger Lift Lobby
- Loading & Unloading Bay
- End of Trip Facilities
- Washrooms
- Gas Yard
- Reduced Headroom Area
- 1 Main Lobby
- 2 Bus Stop (To Be Constructed Later)

# OVERALL FLOOR PLANS

LEVEL 2



Floor loading of factory units: **15kN/sqm**  
Clear height of factory units: **6m\***

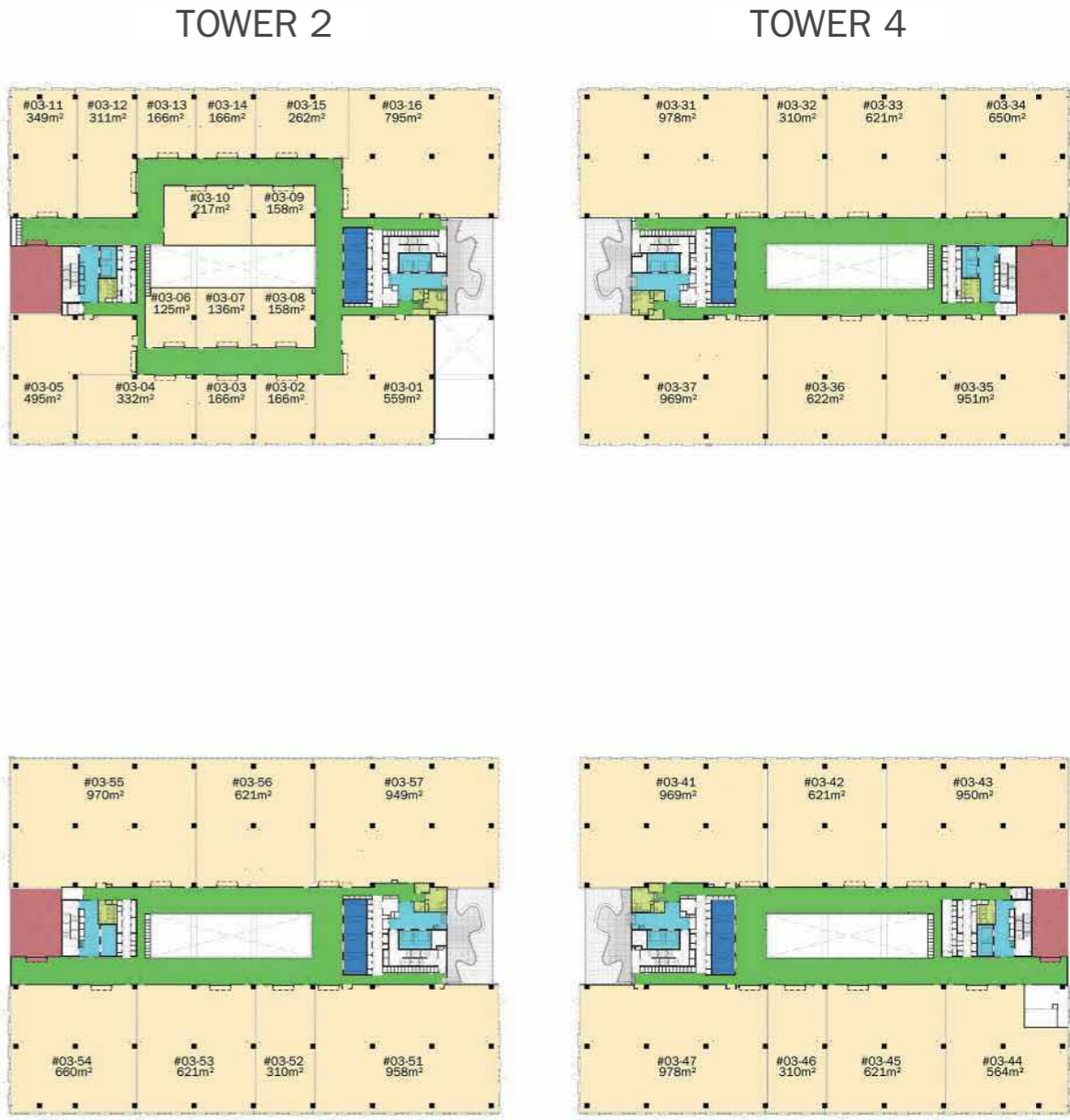
\* Clear height : floor finished level to underside of beam  
The plans are subject to change as may be approved by relevant authorities. All GFA listed are approximate measurements only and are subject to final survey. Localised lower headroom in units with double slab.



- Factory Units
- Ancillary Units
- Commercial Units
- Corridor
- Goods Lift Lobby
- Passenger Lift Lobby
- End of Trip Facilities
- Hoisting Zone
- Welcome Centre
- Washrooms
- Reduced Headroom Area
- ORA Outdoor Resting Area

# OVERALL FLOOR PLANS

LEVEL 3



Floor loading of factory units: **15kN/sqm**  
Clear height of factory units: **6m\***

\* Clear height : floor finished level to underside of beam  
The plans are subject to change as may be approved by relevant authorities. All GFA listed are approximate measurements only and are subject to final survey. Localised lower headroom in units with double slab.

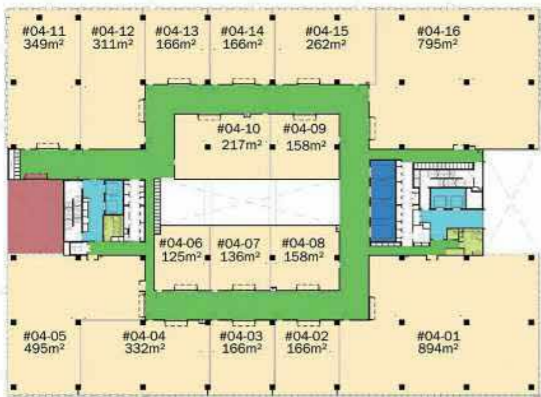


- Factory Units
- Corridor
- Goods Lift Lobby
- Passenger Lift Lobby
- Washrooms
- Hoisting Zone

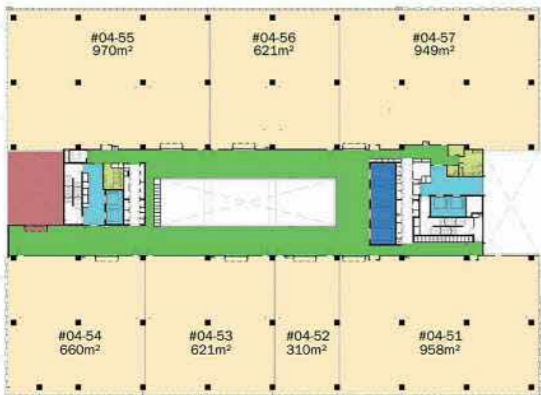
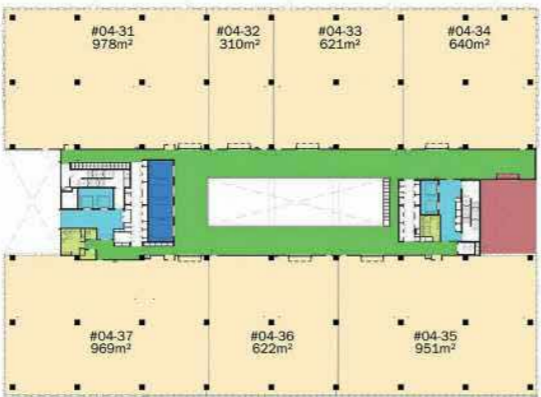
# OVERALL FLOOR PLANS

LEVEL 4

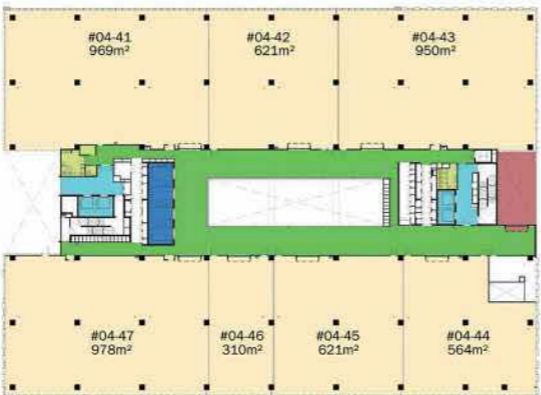
TOWER 2



TOWER 4



TOWER 1



TOWER 3

Floor loading of factory units: **10kN/sqm**  
Clear height of factory units: **4.8m\***

- Factory Units
- Corridor
- Goods Lift Lobby
- Passenger Lift Lobby
- Washrooms
- Hoisting Zone

\* Clear height : floor finished level to underside of beam  
The plans are subject to change as may be approved by relevant authorities. All GFA listed are approximate measurements only and are subject to final survey. Localised lower headroom in units with double slab.



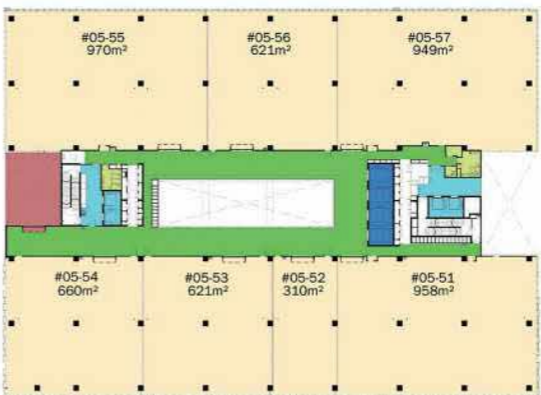
# OVERALL FLOOR PLANS

LEVEL 5

TOWER 2



TOWER 4



TOWER 1



TOWER 3

Floor loading of factory units: **10kN/sqm**  
Clear height of factory units: **4.8m\***

- Factory Units
- Corridor
- Goods Lift Lobby
- Passenger Lift Lobby
- Washrooms
- Other Spaces (Non-leasable)
- Hoisting Zone
- Reduced Headroom Area

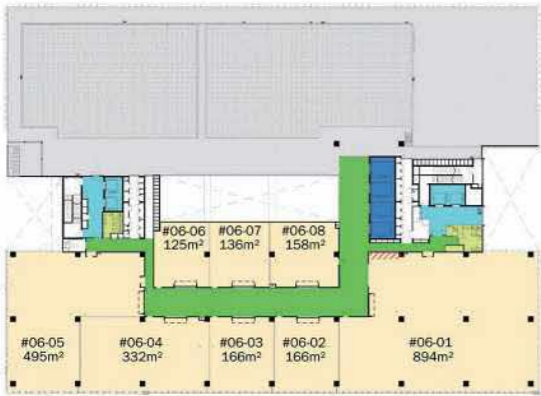
\* Clear height : floor finished level to underside of beam  
The plans are subject to change as may be approved by relevant authorities. All GFA listed are approximate measurements only and are subject to final survey. Localised lower headroom in units with double slab.



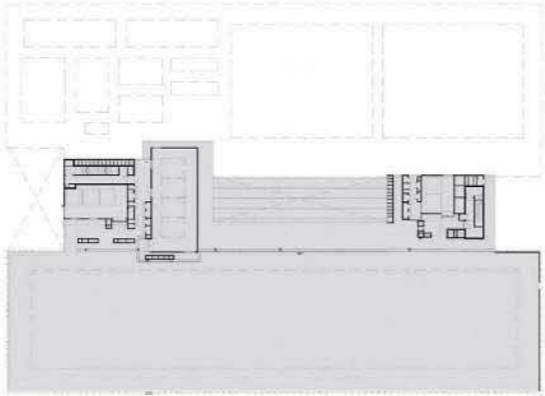
# OVERALL FLOOR PLANS

LEVEL 6

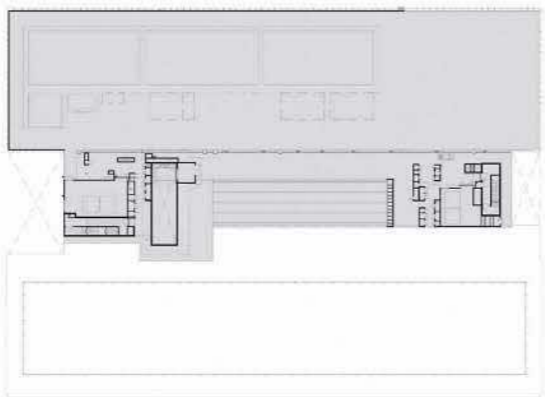
TOWER 2



TOWER 4



TOWER 1



TOWER 3

Floor loading of factory units: **10kN/sqm**  
Clear height of factory units: **4.8m\***

\* Clear height : floor finished level to underside of beam

The plans are subject to change as may be approved by relevant authorities. All GFA listed are approximate measurements only and are subject to final survey. Localised lower headroom in units with double slab.



- Factory Units
- Corridor
- Goods Lift Lobby
- Passenger Lift Lobby
- Washrooms
- Other Spaces (Non-leasable)
- Reduced Headroom Area

# DETAILED FLOOR PLANS



# DETAILED FLOOR PLANS

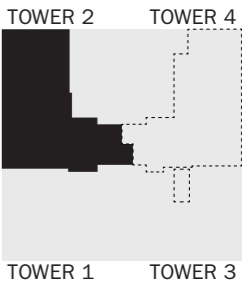
## BASEMENT 2



# DETAILED FLOOR PLANS

## BASEMENT 2

Unit	Electrical Loading	No. of Floor Traps	Ventilation Mode <sup>1</sup>
#B2-01	300W/m²	1	AC/MV
#B2-02		1	
#B2-03		2	
#B2-04		2	
#B2-05		2	
#B2-06		2	
#B2-18		0	
#B2-19		2	
#B2-20		2	
#B2-21		1	
#B2-22		3	
#B2-23		1	
#B2-24		2	



\* Clear height : floor finished level to underside of beam

<sup>1</sup> The ventilation system shall be installed by tenants.

The plans are subject to change as may be approved by relevant authorities. All GFA listed are approximate measurements only and are subject to final survey. Localised lower headroom in units with double slab.



- Factory Units

Goods Lift Lobby

Passenger Lift Lobby

Loading/Unloading Bay

Reduced Headroom Area
- Fire Roller Shutter

AC Air-Conditioning

MV Mechanical Ventilation

Non-structural Intertency Wall

# DETAILED FLOOR PLANS

## BASEMENT 2



# DETAILED FLOOR PLANS

## BASEMENT 2

Unit	Electrical Loading	No. of Floor Traps	Ventilation Mode <sup>1</sup>
#B2-07	300W/m <sup>2</sup>	2	AC/MV
#B2-08		2	
#B2-09		2	
#B2-10		1	
#B2-11		1	
#B2-12		2	
#B2-13		2	
#B2-14		2	
#B2-15		1	
#B2-16		0	
#B2-17		1	



\* Clear height : floor finished level to underside of beam

<sup>1</sup> The ventilation system shall be installed by tenants.

The plans are subject to change as may be approved by relevant authorities. All GFA listed are approximate measurements only and are subject to final survey. Localised lower headroom in units with double slab.

Factory Units

Goods Lift Lobby

Passenger Lift Lobby

Loading/Unloading Bay

Reduced Headroom Area

Fire Roller Shutter

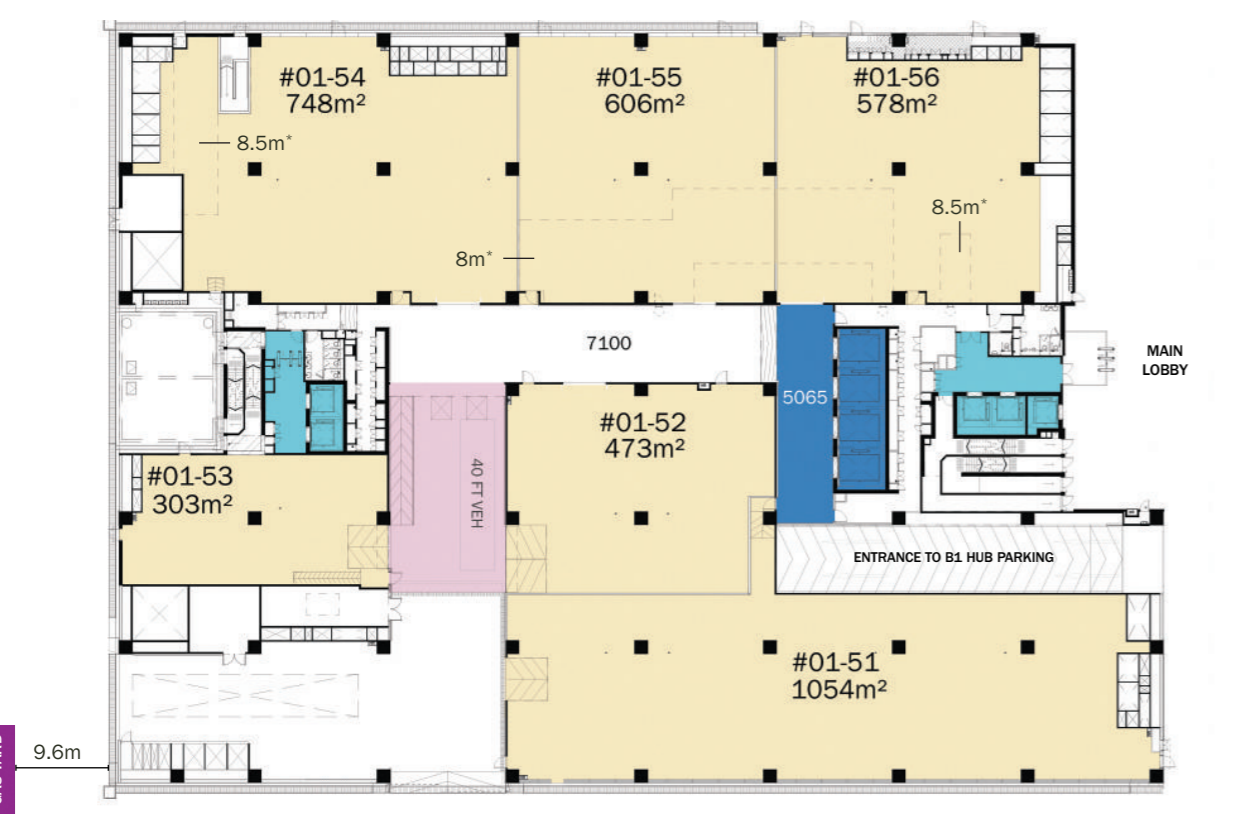
AC Air-Conditioning

MV Mechanical Ventilation

Non-structural Intertency Wall

# DETAILED FLOOR PLANS

## LEVEL 1 - TOWER 1



Unit	Electrical Loading	No. of Floor Traps	Ventilation Mode <sup>1</sup>	TOWER 2	TOWER 4
#01-51	300W/m²	4	AC/MV		
#01-52		2			
#01-53		1			
#01-54		2			
#01-55		2			
#01-56		2			

\* Clear height : floor finished level to underside of beam

<sup>1</sup> The ventilation system shall be installed by tenants.

The plans are subject to change as may be approved by relevant authorities. All GFA listed are approximate measurements only and are subject to final survey. Localised lower headroom in units with double slab.

Factory Units

Goods Lift Lobby

Passenger Lift Lobby

Loading/Unloading Bay

Reduced Headroom Area

Fire Roller Shutter

AC Air-Conditioning

MV Mechanical Ventilation

Non-structural Intertenancy Wall

# DETAILED FLOOR PLANS

## LEVEL 1 - TOWER 2



Unit	Electrical Loading	No. of Floor Traps	Ventilation Mode <sup>1</sup>	TOWER 2	TOWER 4
#01-01	300W/m²	0	AC/MV		
#01-02		3			
#01-03		3			
#01-04		1			
#01-05		2			
#01-06		3			

\* Clear height : floor finished level to underside of beam

<sup>1</sup> The ventilation system shall be installed by tenants.

The plans are subject to change as may be approved by relevant authorities. All GFA listed are approximate measurements only and are subject to final survey. Localised lower headroom in units with double slab.

Factory Units

Goods Lift Lobby

Passenger Lift Lobby

Loading/Unloading Bay

Reduced Headroom Area

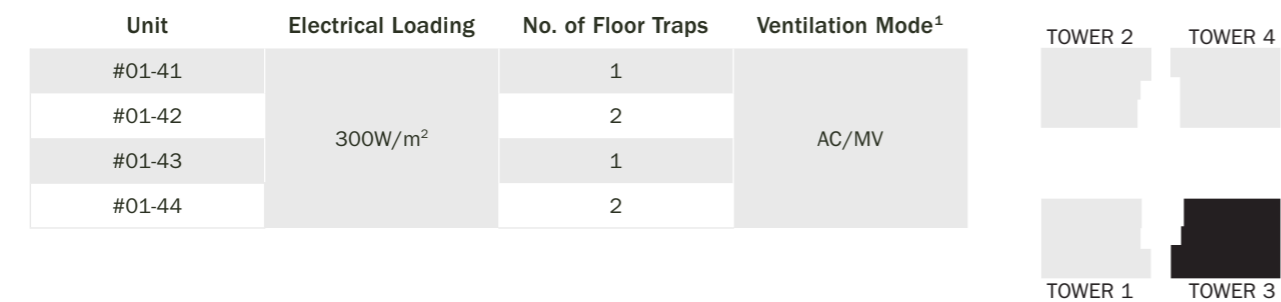
Fire Roller Shutter

AC Air-Conditioning

MV Mechanical Ventilation

Non-structural Intertenancy Wall

## LEVEL 1 - TOWER 3



— Non-structural  
Intertenancy Wall

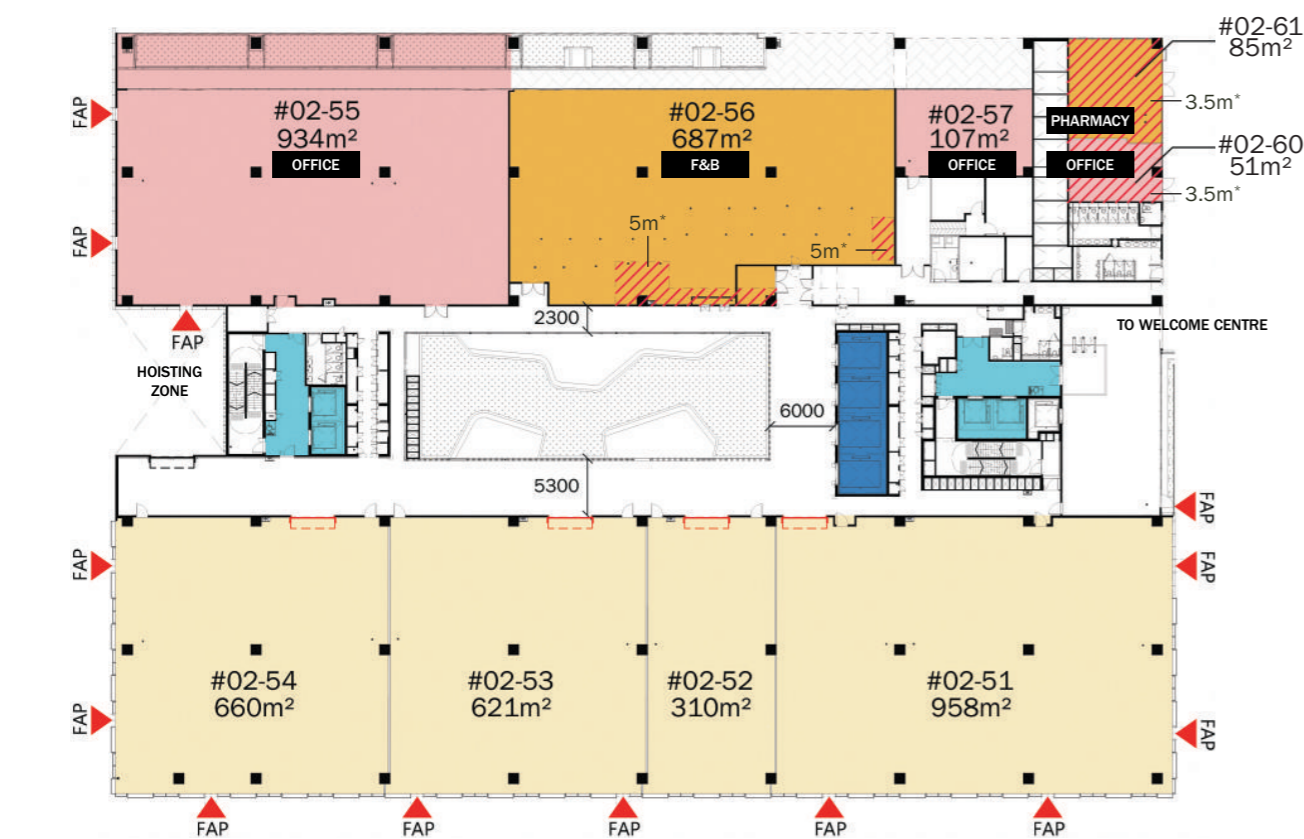
## LEVEL 1 - TOWER 4



— Non-structural  
Intertency Wall

# DETAILED FLOOR PLANS

## LEVEL 2 - TOWER 1




Unit	Electrical Loading	No. of Floor Traps	Ventilation Mode <sup>1</sup>	TOWER 2	TOWER 4
#02-51	300W/m <sup>2</sup>	3	AC/MV		
#02-52		1			
#02-53		2			
#02-54		2			
#02-55	120W/m <sup>2</sup>	3	AC		
#02-56	300W/m <sup>2</sup>	23 <sup>†</sup>			
#02-57	120W/m <sup>2</sup>	1			
#02-60	120W/m <sup>2</sup>	0			
#02-61	300W/m <sup>2</sup>	2			


\* Clear height : floor finished level to underside of beam


<sup>†</sup> Kitchen Floor Trap


<sup>1</sup> The ventilation system shall be installed by tenants.


The plans are subject to change as may be approved by relevant authorities. All GFA listed are approximate measurements only and are subject to final survey. Localised lower headroom in units with double slab.





 Factory Units


 Ancillary Units


 Commercial Units

 Goods Lift Lobby

 Passenger Lift Lobby

 Reduced Headroom Area

 Fire Roller Shutter

 Fireman Access Panel

AC

Air-Conditioning

MV

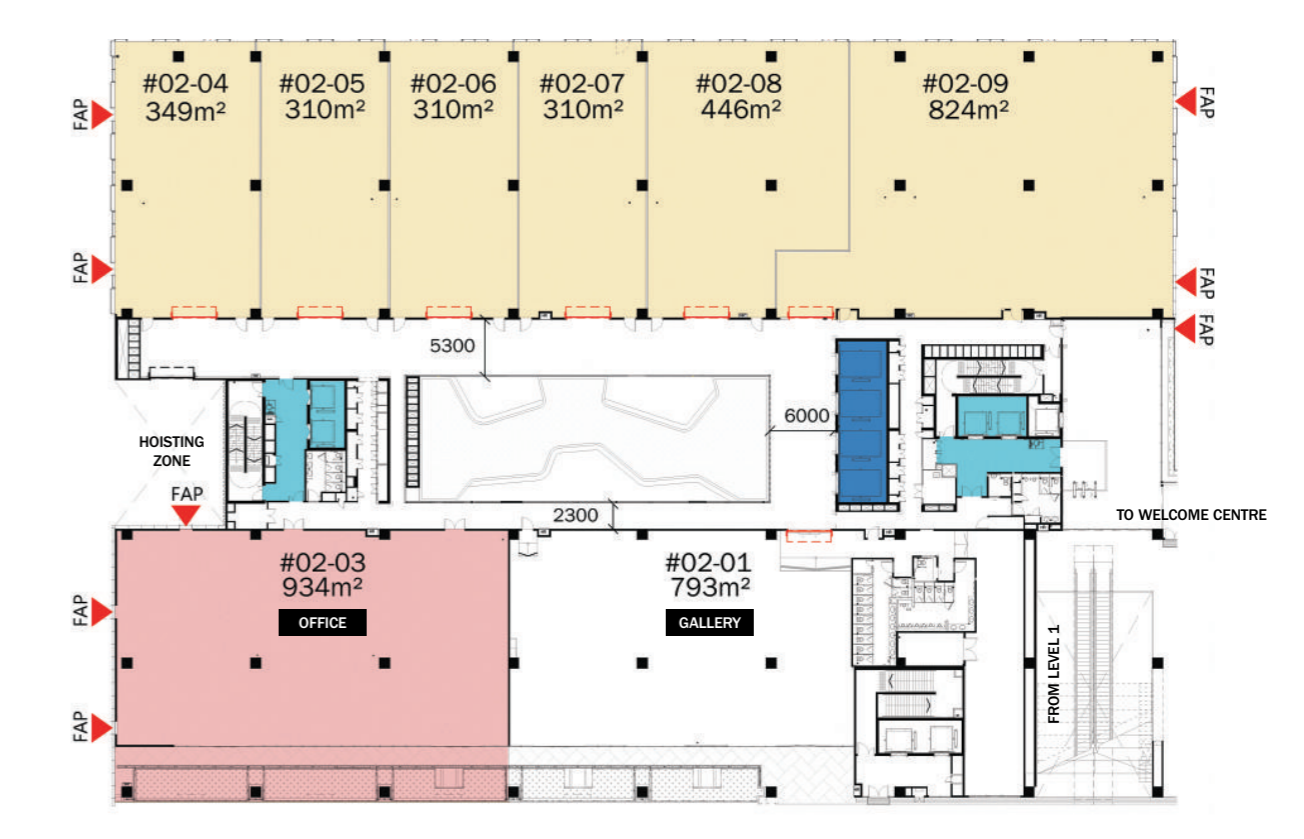
Mechanical Ventilation





—

Non-structural Intertency Wall

# DETAILED FLOOR PLANS

## LEVEL 2 - TOWER 2




Unit	Electrical Loading	No. of Floor Traps	Ventilation Mode <sup>1</sup>	TOWER 2	TOWER 4
#02-01	120W/m <sup>2</sup>	1 <sup>†</sup>	AC		
#02-03		3			
#02-04		1			
#02-05	300W/m <sup>2</sup>	1	AC/MV		
#02-06		1			
#02-07		1			
#02-08		1			
#02-09		3			


\* Clear height : floor finished level to underside of beam


<sup>†</sup> Kitchen Floor Trap


<sup>1</sup> The ventilation system shall be installed by tenants.


The plans are subject to change as may be approved by relevant authorities. All GFA listed are approximate measurements only and are subject to final survey. Localised lower headroom in units with double slab.





 Factory Units


 Ancillary Units


 Commercial Units

 Goods Lift Lobby

 Passenger Lift Lobby

 Reduced Headroom Area

 Fire Roller Shutter

 Fireman Access Panel

AC

Air-Conditioning

MV

Mechanical Ventilation

—

Non-structural Intertency Wall

# DETAILED FLOOR PLANS

## LEVEL 2 - TOWER 3



Unit	Electrical Loading	No. of Floor Traps	Ventilation Mode <sup>1</sup>	TOWER 2	TOWER 4
#02-41	300W/m²	0	AC/MV		
#02-42		3			
#02-43		2			
#02-44		2			
#02-45		1			
#02-46		3			

\* Clear height : floor finished level to underside of beam

† Kitchen Floor Trap

<sup>1</sup> The ventilation system shall be installed by tenants.

The plans are subject to change as may be approved by relevant authorities. All GFA listed are approximate measurements only and are subject to final survey. Localised lower headroom in units with double slab.



- Factory Units

Ancillary Units

Commercial Units

Goods Lift Lobby

Passenger Lift Lobby

Reduced Headroom Area
- Fire Roller Shutter

Fireman Access Panel

AC Air-Conditioning

MV Mechanical Ventilation

Non-structural Intertency Wall

# DETAILED FLOOR PLANS

## LEVEL 2 - TOWER 4



Unit	Electrical Loading	No. of Floor Traps	Ventilation Mode <sup>1</sup>	TOWER 2	TOWER 4
#02-31	300W/m²	3	AC/MV		
#02-32		1			
#02-33		2			
#02-34		2			
#02-35		2			
#02-36	120W/m²	0	AC		
#02-37	300W/m²	4†			
#02-K31	300W/m²	1			

\* Clear height : floor finished level to underside of beam

† Kitchen Floor Trap

<sup>1</sup> The ventilation system shall be installed by tenants.

The plans are subject to change as may be approved by relevant authorities. All GFA listed are approximate measurements only and are subject to final survey. Localised lower headroom in units with double slab.



- Factory Units

Ancillary Units

Commercial Units

Goods Lift Lobby

Passenger Lift Lobby

Reduced Headroom Area
- Fire Roller Shutter

Fireman Access Panel

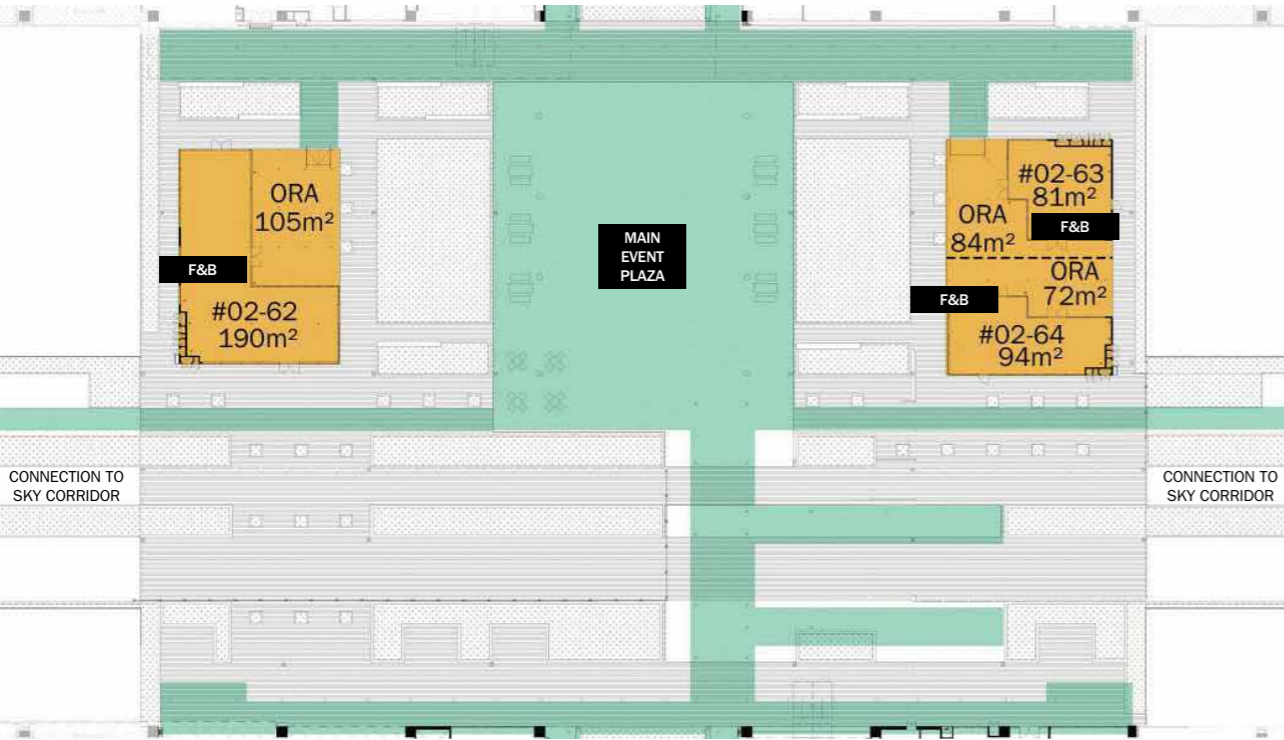
AC Air-Conditioning

MV Mechanical Ventilation

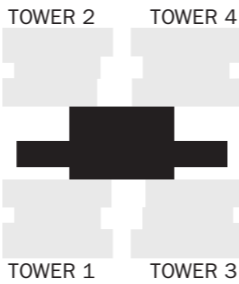
Non-structural Intertency Wall

# DETAILED FLOOR PLANS

## LEVEL 2 - MAIN EVENT PLAZA/ SKY CORRIDOR



Unit	Electrical Loading	No. of Floor Traps	Ventilation Mode <sup>1</sup>
#02-62	300W/m <sup>2</sup>	3 <sup>†</sup>	AC
#02-62 (ORA)		2	NV
#02-63		2 <sup>†</sup>	AC
#02-63 (ORA)		1	NV
#02-64		3 <sup>†</sup>	AC
#02-64 (ORA)		1	NV



\* Clear height : floor finished level to underside of beam

<sup>†</sup> Kitchen Floor Trap

<sup>1</sup> The ventilation system shall be installed by tenants.

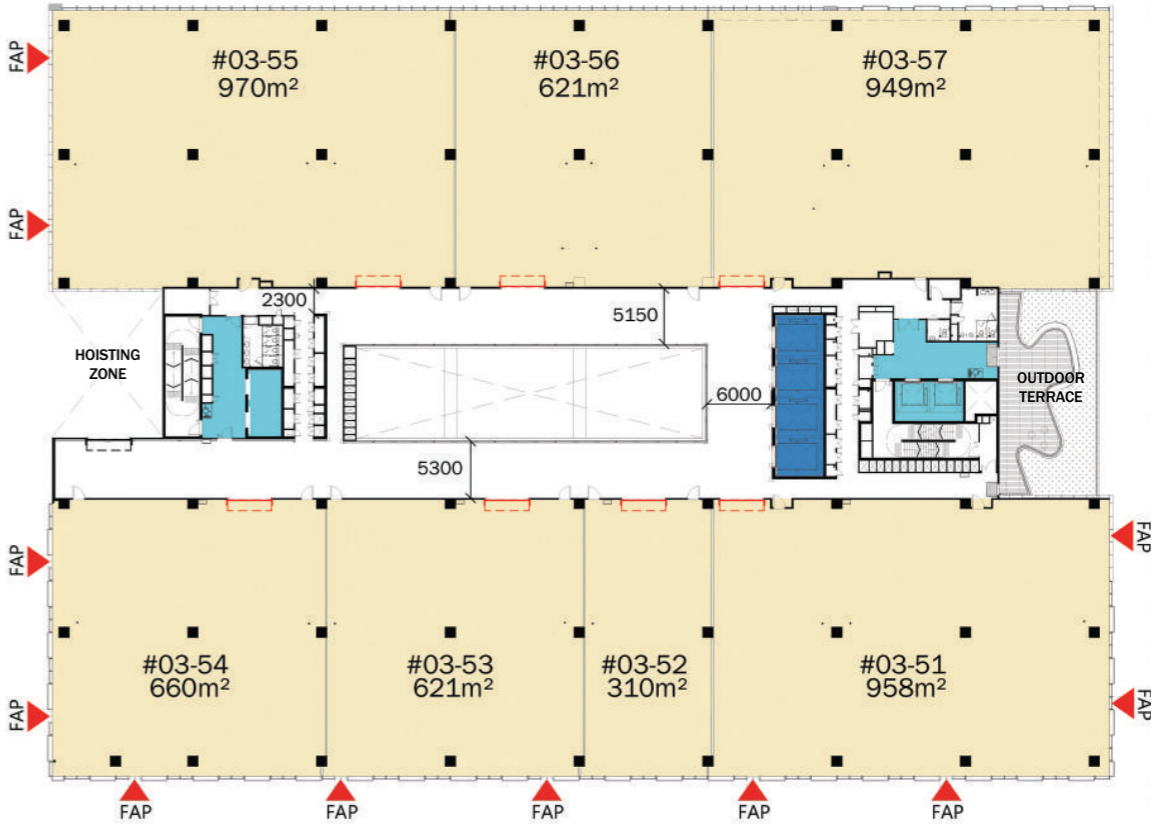
The plans are subject to change as may be approved by relevant authorities. All GFA listed are approximate measurements only and are subject to final survey. Localised lower headroom in units with double slab.



- Commercial Units
- Linkways Connecting Towers
- ORA Outdoor Resting Area
- NV Natural Ventilation
- AC Air-Conditioning
- MV Mechanical Ventilation

# DETAILED FLOOR PLANS

## LEVEL 3 - TOWER 1



Unit	Electrical Loading	No. of Floor Traps	Ventilation Mode <sup>1</sup>	TOWER 2	TOWER 4
#03-51	300W/m <sup>2</sup>	3	AC/MV		
#03-52		1			
#03-53		2			
#03-54		2			
#03-55		3			
#03-56		4			
#03-57		4			

<sup>1</sup> The ventilation system shall be installed by tenants.

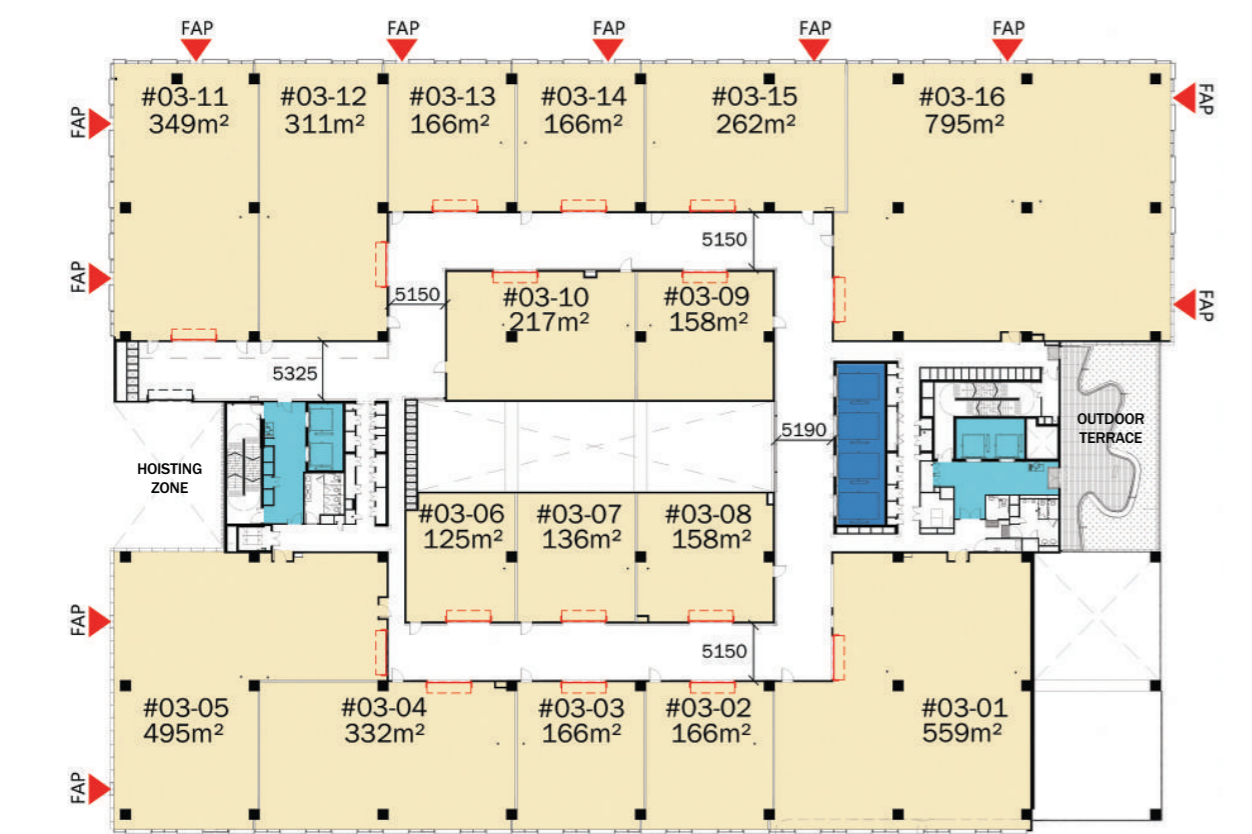
The plans are subject to change as may be approved by relevant authorities. All GFA listed are approximate measurements only and are subject to final survey. Localised lower headroom in units with double slab.



- Factory Units
- Goods Lift Lobby
- Passenger Lift Lobby
- Non-structural Intertency Wall
- Fire Roller Shutter
- FAP Fireman Access Panel
- AC Air-Conditioning
- MV Mechanical Ventilation

# DETAILED FLOOR PLANS

## LEVEL 3 - TOWER 2



Unit	Electrical Loading	No. of Floor Traps	Ventilation Mode <sup>1</sup>
#03-01	300W/m²	2	AC/MV
#03-02		1	
#03-03		1	
#03-04		1	
#03-05		2	
#03-06		1	
#03-07		1	
#03-08		1	
#03-09		1	
#03-10		2	
#03-11		1	
#03-12		1	
#03-13		1	
#03-14		1	
#03-15		1	
#03-16		3	



<sup>1</sup> The ventilation system shall be installed by tenants.  
The plans are subject to change as may be approved by relevant authorities. All GFA listed are approximate measurements only and are subject to final survey. Localised lower headroom in units with double slab.



- Factory Units

Goods Lift Lobby

Passenger Lift Lobby

Non-structural Intertenancy Wall
- Fire Roller Shutter

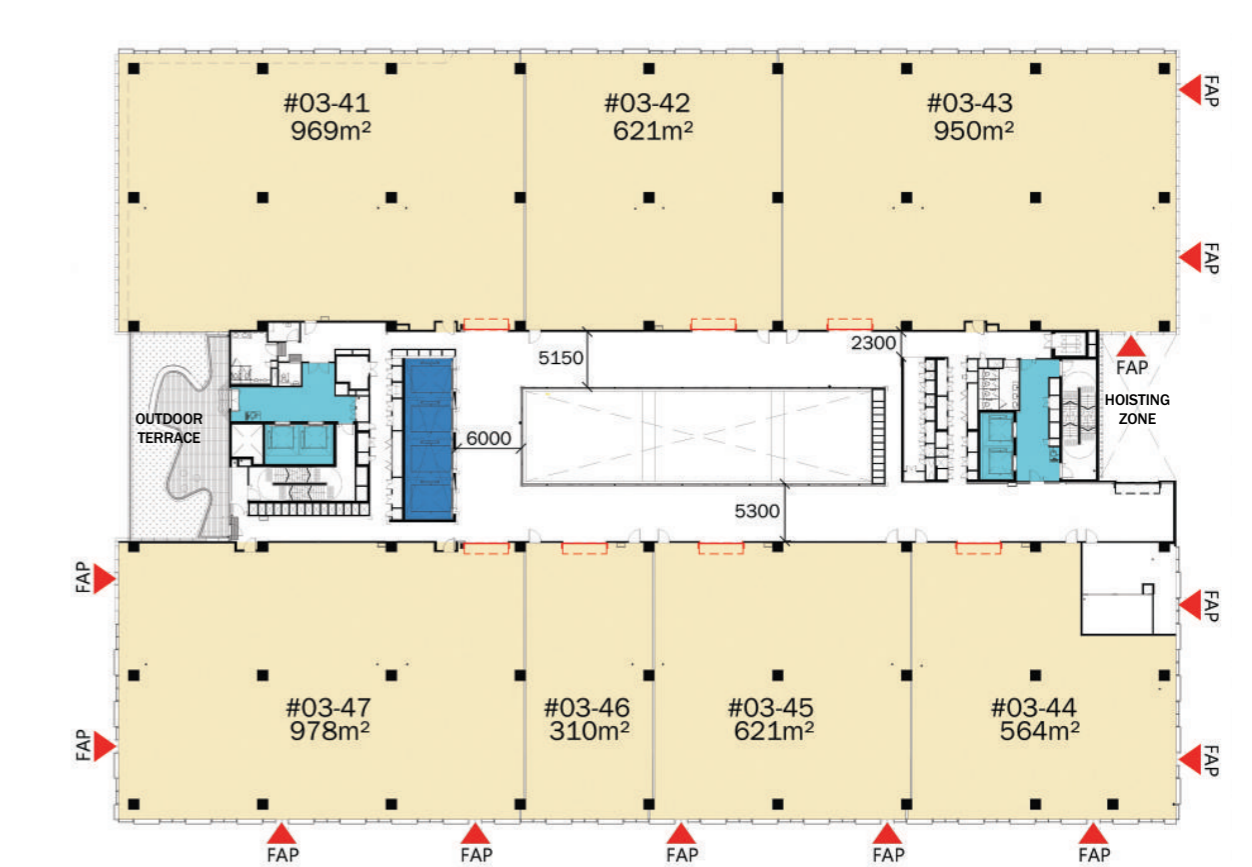
Fireman Access Panel

AC Air-Conditioning

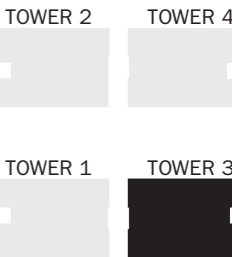
MV Mechanical Ventilation

# DETAILED FLOOR PLANS

## LEVEL 3 - TOWER 3



Unit	Electrical Loading	No. of Floor Traps	Ventilation Mode <sup>1</sup>
#03-41	300W/m²	3	AC/MV
#03-42		2	
#03-43		3	
#03-44		2	
#03-45		2	
#03-46		1	
#03-47		3	



<sup>1</sup> The ventilation system shall be installed by tenants.  
The plans are subject to change as may be approved by relevant authorities. All GFA listed are approximate measurements only and are subject to final survey. Localised lower headroom in units with double slab.



- Factory Units

Goods Lift Lobby

Passenger Lift Lobby

Non-structural Intertenancy Wall
- Fire Roller Shutter

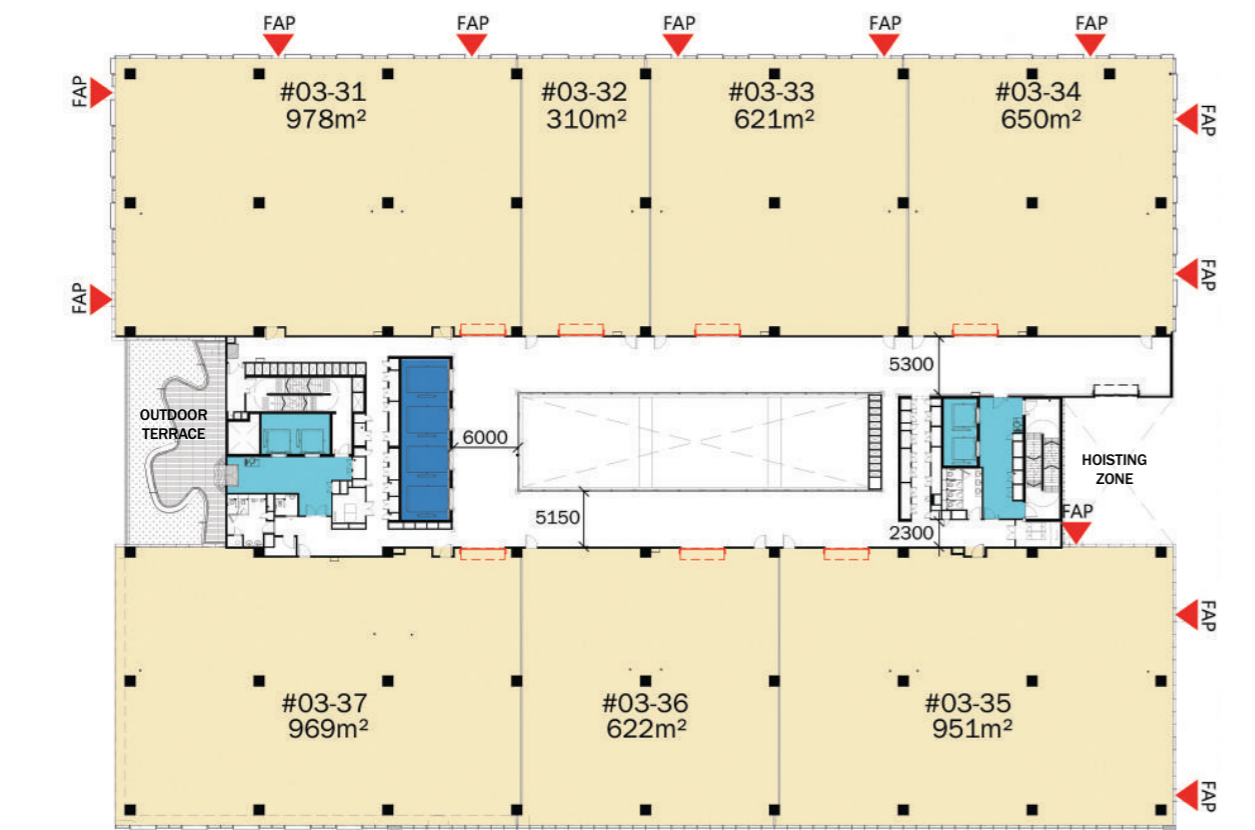
Fireman Access Panel

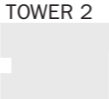

AC Air-Conditioning

MV Mechanical Ventilation

# DETAILED FLOOR PLANS


## LEVEL 3 - TOWER 4





Unit	Electrical Loading	No. of Floor Traps	Ventilation Mode <sup>1</sup>	TOWER 2	TOWER 4
#03-31	300W/m <sup>2</sup>	3	AC/MV		
#03-32		1			
#03-33		2			
#03-34		2			
#03-35		3			
#03-36		2			
#03-37		3			



<sup>1</sup> The ventilation system shall be installed by tenants.  
The plans are subject to change as may be approved by relevant authorities. All GFA listed are approximate measurements only and are subject to final survey. Localised lower headroom in units with double slab.




-  Factory Units

 Goods Lift Lobby

 Passenger Lift Lobby

 Non-structural Intertenancy Wall
-  Fire Roller Shutter

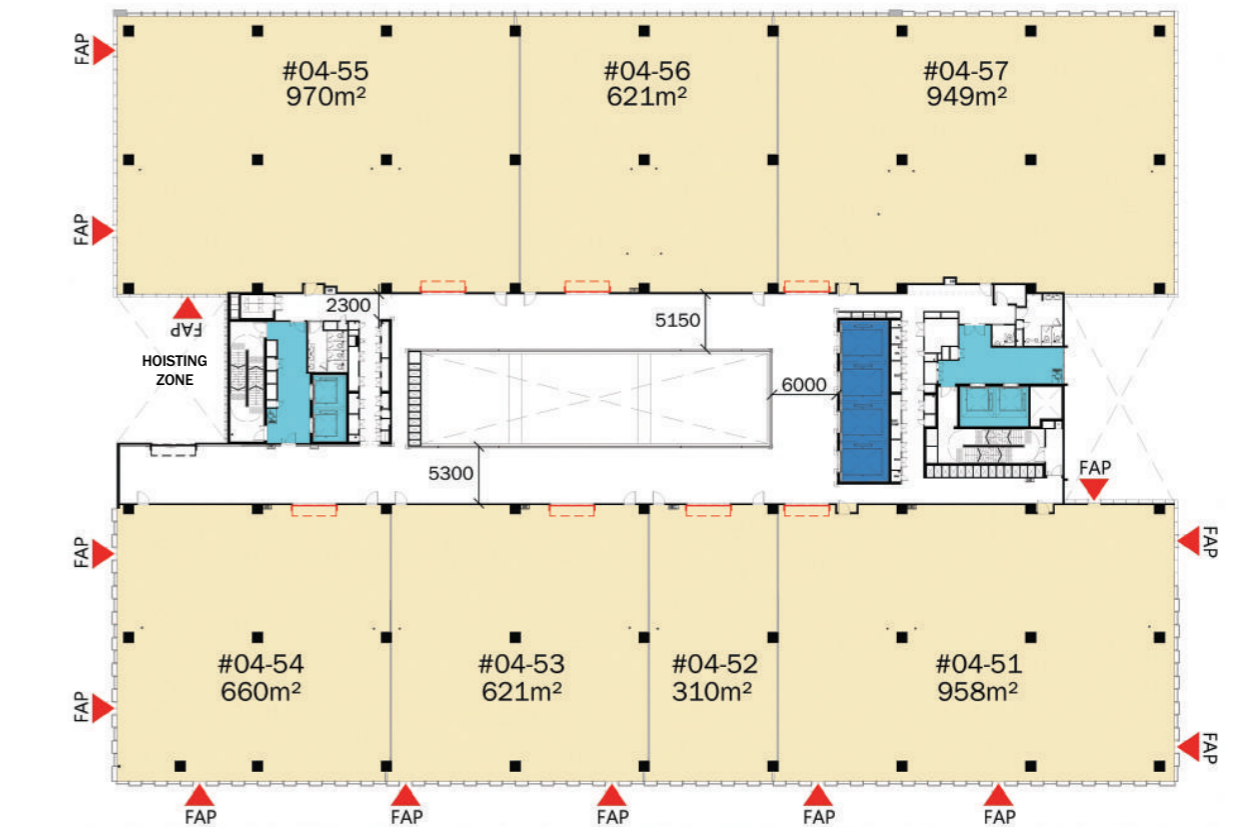
 Fireman Access Panel

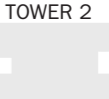
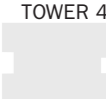
AC Air-Conditioning

MV Mechanical Ventilation

# DETAILED FLOOR PLANS


## LEVEL 4 - TOWER 1





Unit	Electrical Loading	No. of Floor Traps	Ventilation Mode <sup>1</sup>	TOWER 2	TOWER 4
#04-51	300W/m <sup>2</sup>	3	AC/MV		
#04-52		1			
#04-53		2			
#04-54		2			
#04-55		3			
#04-56		4			
#04-57		4			



<sup>1</sup> The ventilation system shall be installed by tenants.  
The plans are subject to change as may be approved by relevant authorities. All GFA listed are approximate measurements only and are subject to final survey. Localised lower headroom in units with double slab.




-  Factory Units

 Goods Lift Lobby

 Passenger Lift Lobby

 Non-structural Intertenancy Wall
-  Fire Roller Shutter

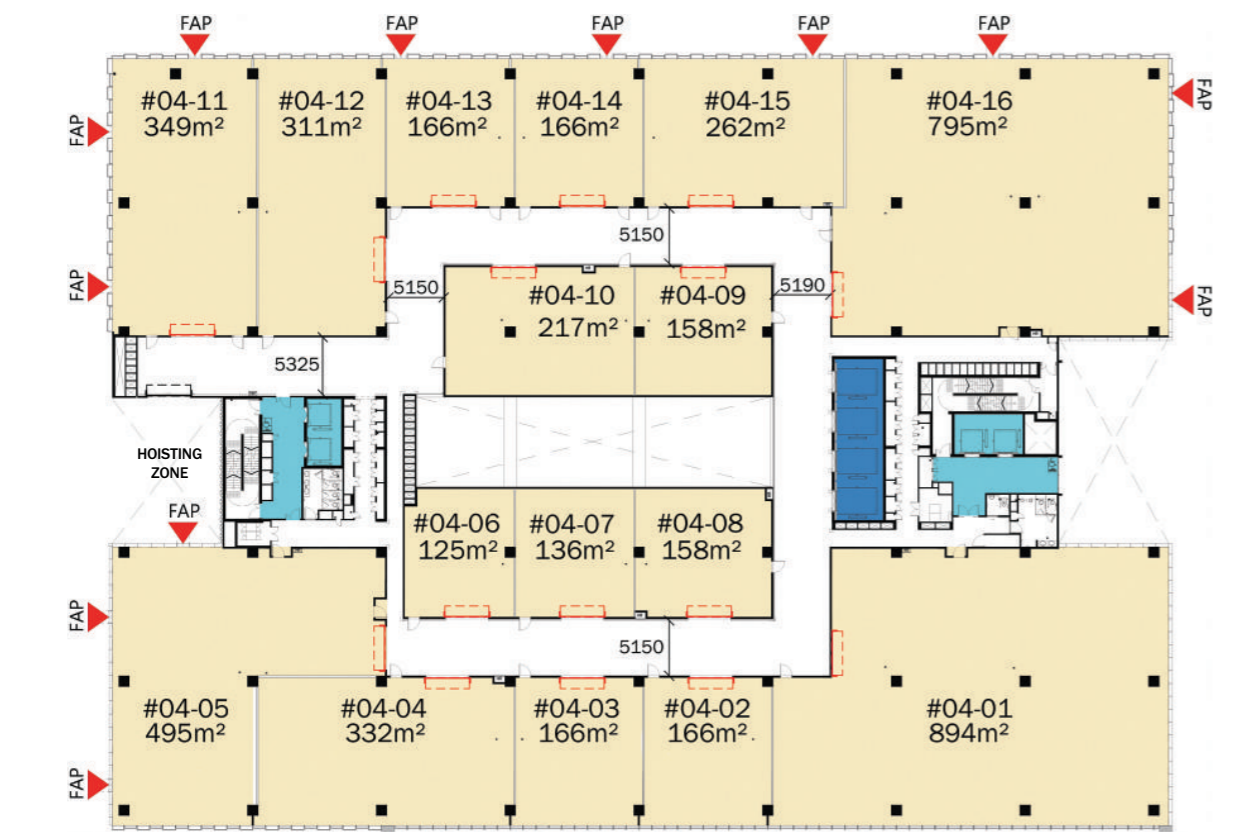
 Fireman Access Panel

AC Air-Conditioning

MV Mechanical Ventilation

# DETAILED FLOOR PLANS

## LEVEL 4 - TOWER 2



Unit	Electrical Loading	No. of Floor Traps	Ventilation Mode <sup>1</sup>	TOWER 2	TOWER 4
#04-01	300W/m <sup>2</sup>	2	AC/MV	■	■
#04-02		1			
#04-03		1		■	■
#04-04		1			
#04-05		2		■	■
#04-06		1			
#04-07		1		■	■
#04-08		1			
#04-09		1		■	■
#04-10		2			
#04-11		1		■	■
#04-12		1			
#04-13		1		■	■
#04-14		1			
#04-15		1		■	■
#04-16		3			

<sup>1</sup> The ventilation system shall be installed by tenants.  
The plans are subject to change as may be approved by relevant authorities. All GFA listed are approximate measurements only and are subject to final survey. Localised lower headroom in units with double slab.



- Factory Units
- Goods Lift Lobby
- Passenger Lift Lobby
- Non-structural Intertenancy Wall
- Fire Roller Shutter
- ▼ FAP

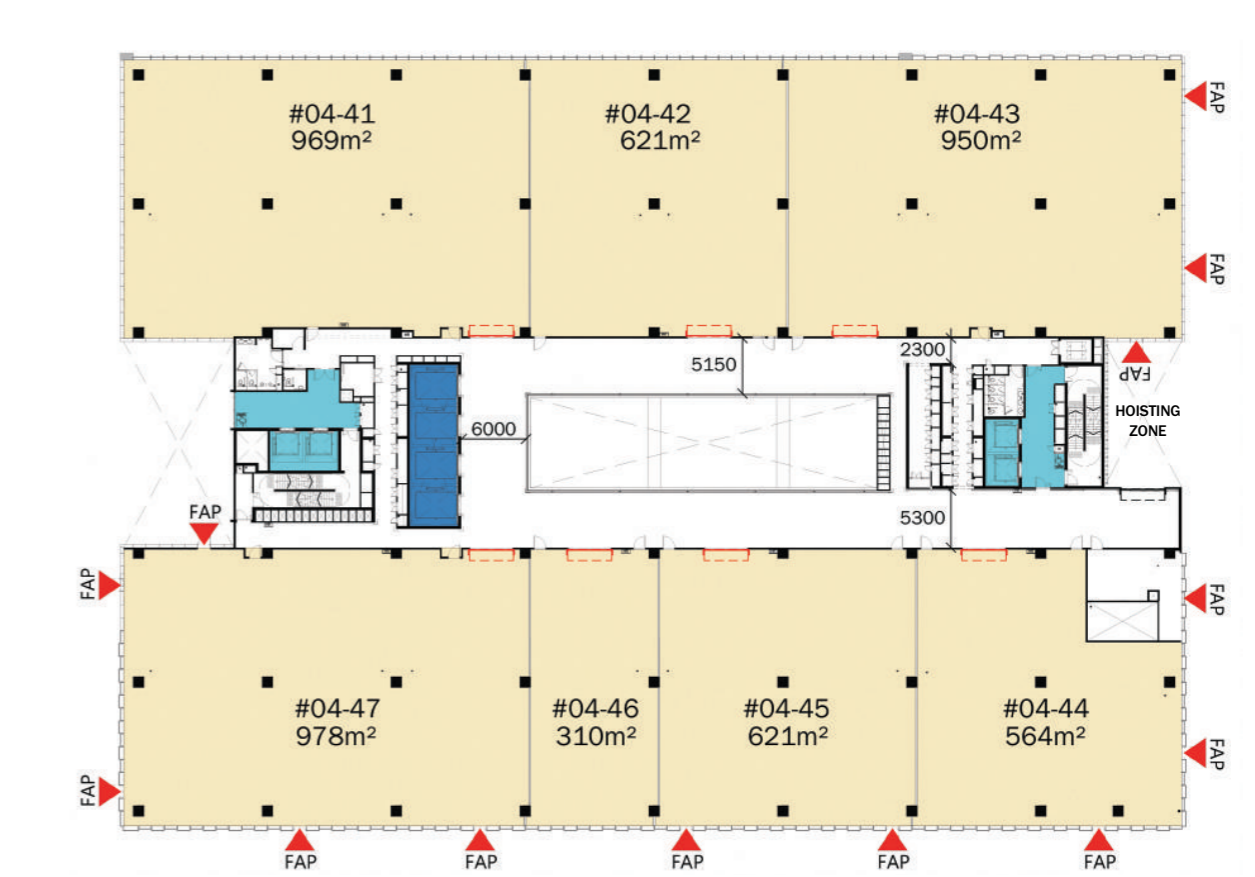
 Fireman Access Panel
- AC

 Air-Conditioning
- MV

 Mechanical Ventilation

# DETAILED FLOOR PLANS

## LEVEL 4 - TOWER 3



Unit	Electrical Loading	No. of Floor Traps	Ventilation Mode <sup>1</sup>	TOWER 2	TOWER 4
#04-41	300W/m <sup>2</sup>	3	AC/MV	■	■
#04-42		2			
#04-43		3		■	■
#04-44		2			
#04-45		2		■	■
#04-46		1			
#04-47		3		■	■

<sup>1</sup> The ventilation system shall be installed by tenants.  
The plans are subject to change as may be approved by relevant authorities. All GFA listed are approximate measurements only and are subject to final survey. Localised lower headroom in units with double slab.



- Factory Units
- Goods Lift Lobby
- Passenger Lift Lobby
- Non-structural Intertenancy Wall
- Fire Roller Shutter
- ▼ FAP

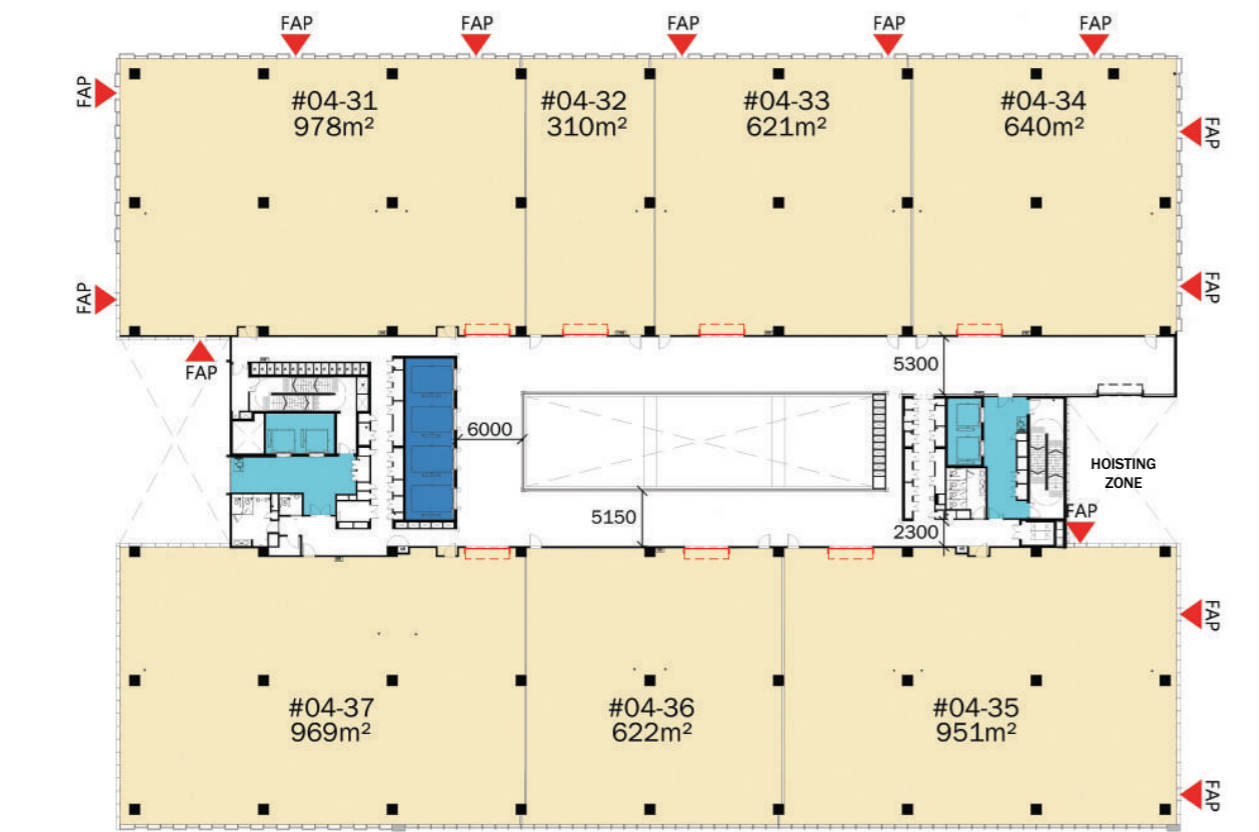
 Fireman Access Panel
- AC

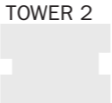
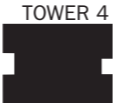
 Air-Conditioning
- MV

 Mechanical Ventilation

# DETAILED FLOOR PLANS


## LEVEL 4 - TOWER 4





Unit	Electrical Loading	No. of Floor Traps	Ventilation Mode <sup>1</sup>	TOWER 2	TOWER 4
#04-31	300W/m²	3	AC/MV		
#04-32		1			
#04-33		2			
#04-34		2			
#04-35		3			
#04-36		2			
#04-37		3			



<sup>1</sup> The ventilation system shall be installed by tenants.  
The plans are subject to change as may be approved by relevant authorities. All GFA listed are approximate measurements only and are subject to final survey. Localised lower headroom in units with double slab.




-  Factory Units

 Goods Lift Lobby

 Passenger Lift Lobby

 Non-structural Intertenancy Wall
-  Fire Roller Shutter

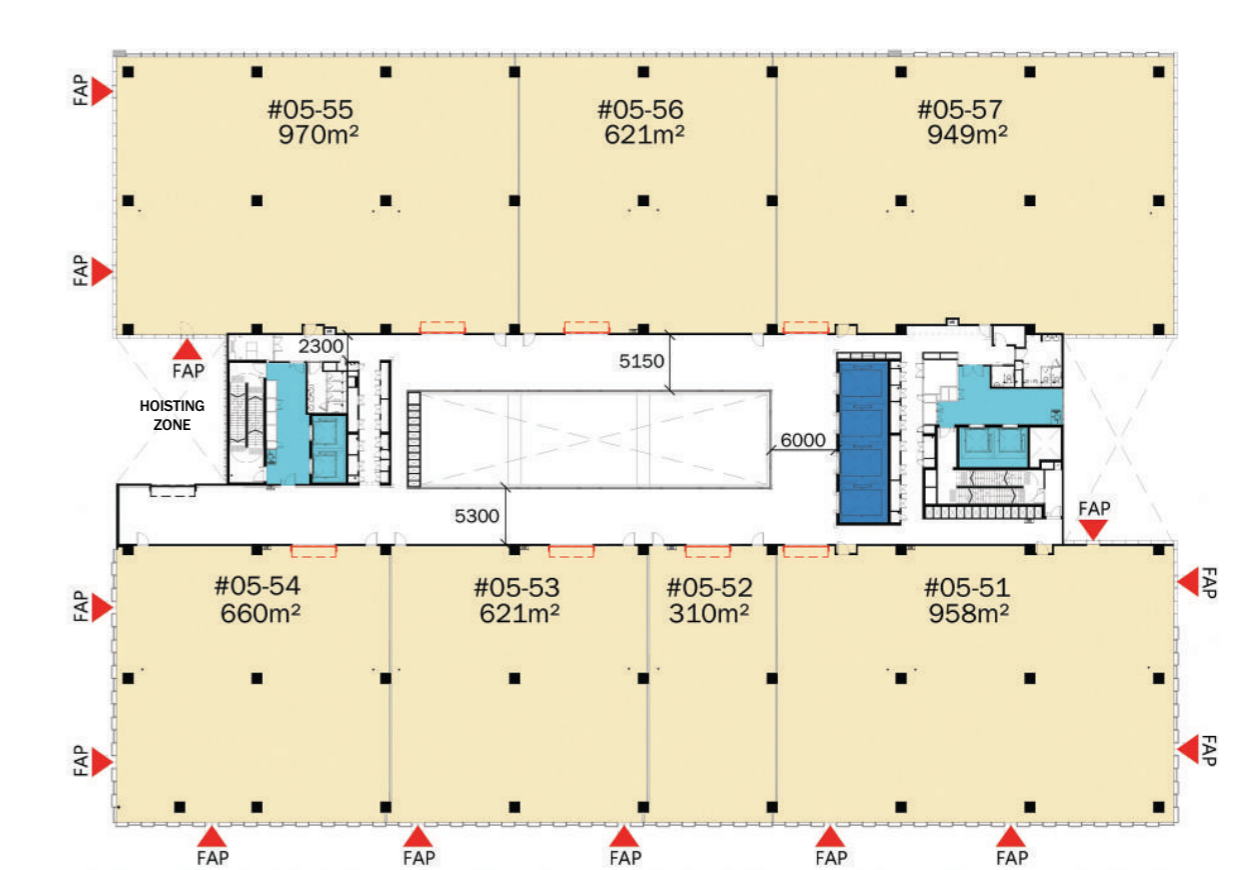
 Fireman Access Panel

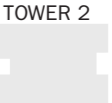
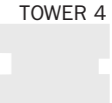
AC Air-Conditioning

MV Mechanical Ventilation

# DETAILED FLOOR PLANS


## LEVEL 5 - TOWER 1





Unit	Electrical Loading	No. of Floor Traps	Ventilation Mode <sup>1</sup>	TOWER 2	TOWER 4
#05-51	300W/m²	3	AC/MV		
#05-52		1			
#05-53		2			
#05-54		2			
#05-55		3			
#05-56		2			
#05-57		3			



\* Clear height : floor finished level to underside of beam  
<sup>1</sup> The ventilation system shall be installed by tenants.  
The plans are subject to change as may be approved by relevant authorities. All GFA listed are approximate measurements only and are subject to final survey. Localised lower headroom in units with double slab.




-  Factory Units

 Goods Lift Lobby


 Passenger Lift Lobby

 Reduced Headroom Area
-  Fire Roller Shutter

 Fireman Access Panel

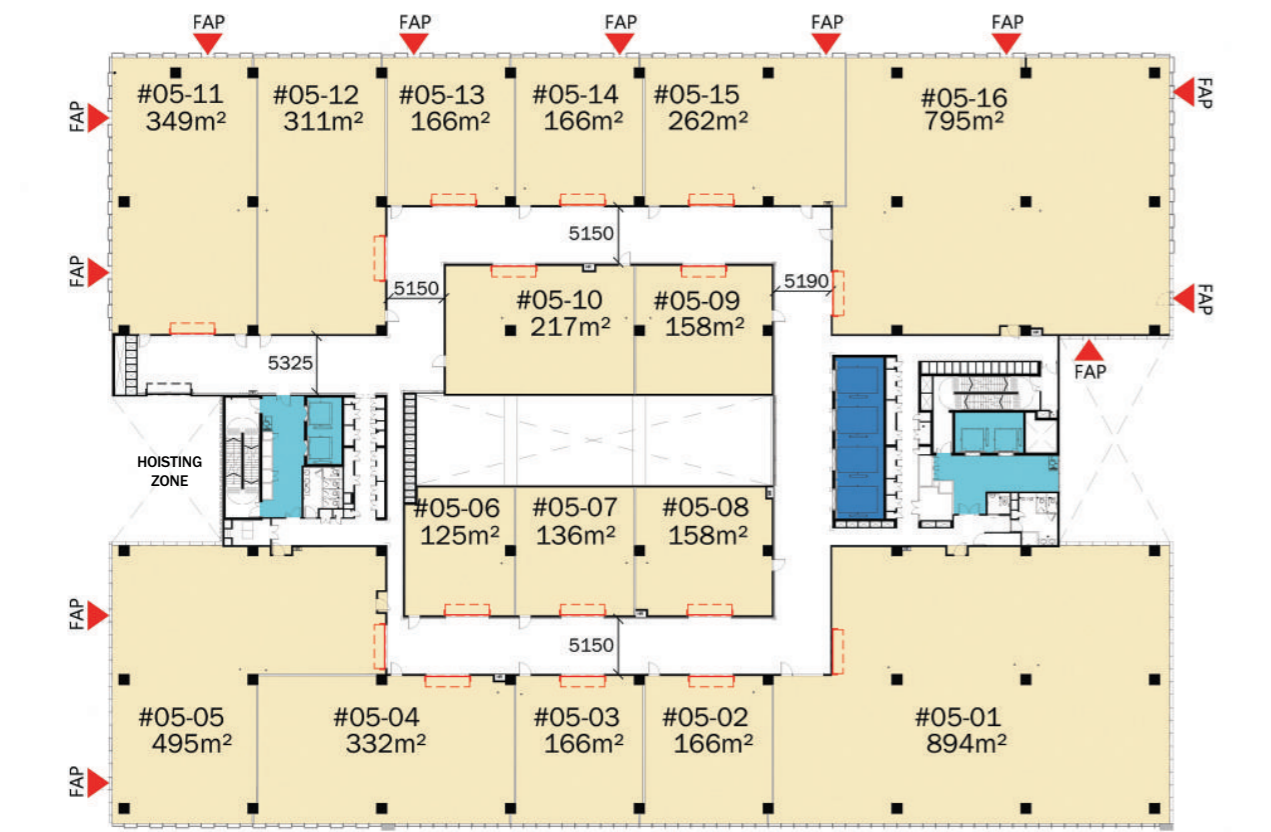
AC Air-Conditioning

MV Mechanical Ventilation

 Non-structural Intertenancy Wall

# DETAILED FLOOR PLANS

## LEVEL 5 - TOWER 2



Unit	Electrical Loading	No. of Floor Traps	Ventilation Mode <sup>1</sup>
#05-01	300W/m²	3	AC/MV
#05-02		1	
#05-03		1	
#05-04		1	
#05-05		2	
#05-06		1	
#05-07		1	
#05-08		1	
#05-09		1	
#05-10		2	
#05-11		1	
#05-12		1	
#05-13		1	
#05-14		1	
#05-15		1	
#05-16		3	

\* Clear height : floor finished level to underside of beam

<sup>1</sup> The ventilation system shall be installed by tenants.

The plans are subject to change as may be approved by relevant authorities. All GFA listed are approximate measurements only and are subject to final survey. Localised lower headroom in units with double slab.

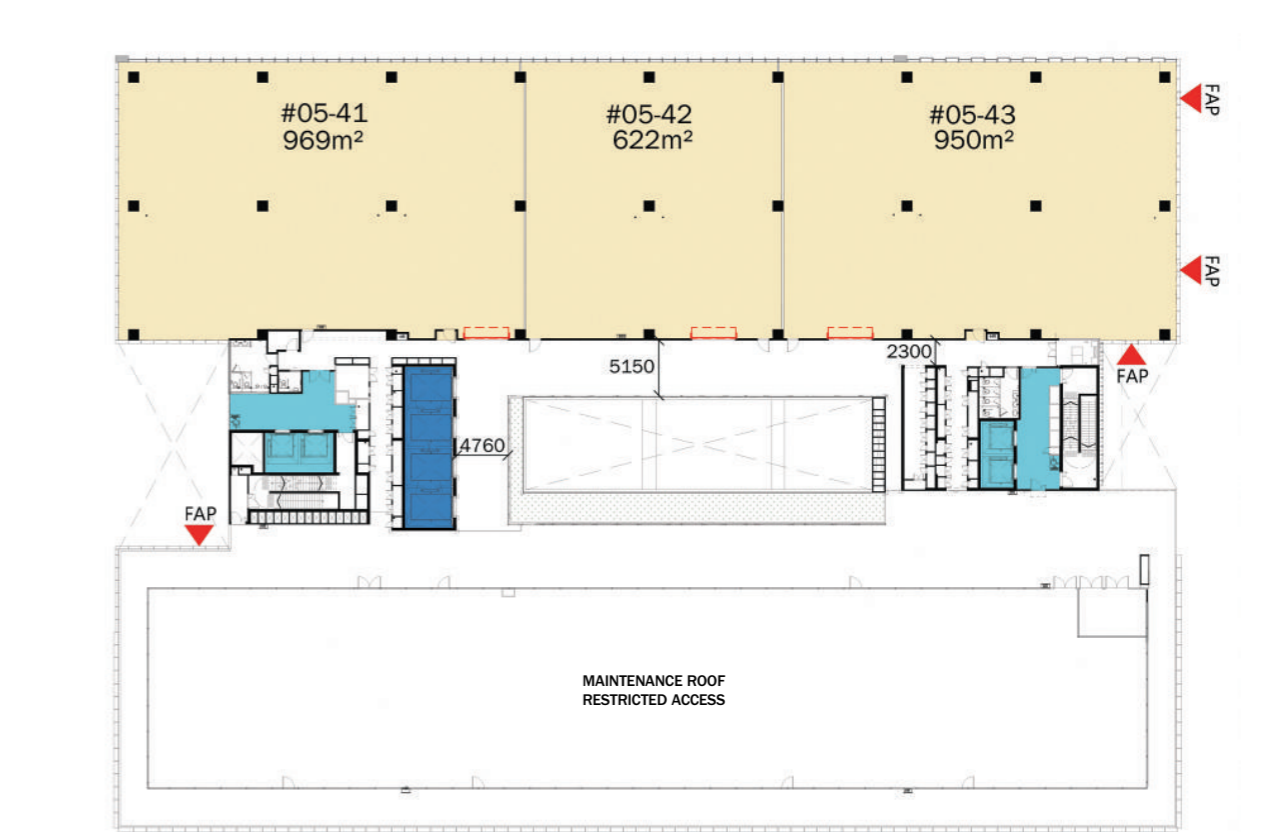


- Factory Units
- Goods Lift Lobby
- Passenger Lift Lobby
- Reduced Headroom Area
- Fire Roller Shutter
- FAP

Fireman Access Panel
- AC Air-Conditioning
- MV Mechanical Ventilation
- Non-structural Intertency Wall

# DETAILED FLOOR PLANS

## LEVEL 5 - TOWER 3



Unit	Electrical Loading	No. of Floor Traps	Ventilation Mode <sup>1</sup>
#05-41	300W/m²	3	AC/MV
#05-42		2	
#05-43		3	

\* Clear height : floor finished level to underside of beam

<sup>1</sup> The ventilation system shall be installed by tenants.

The plans are subject to change as may be approved by relevant authorities. All GFA listed are approximate measurements only and are subject to final survey. Localised lower headroom in units with double slab.

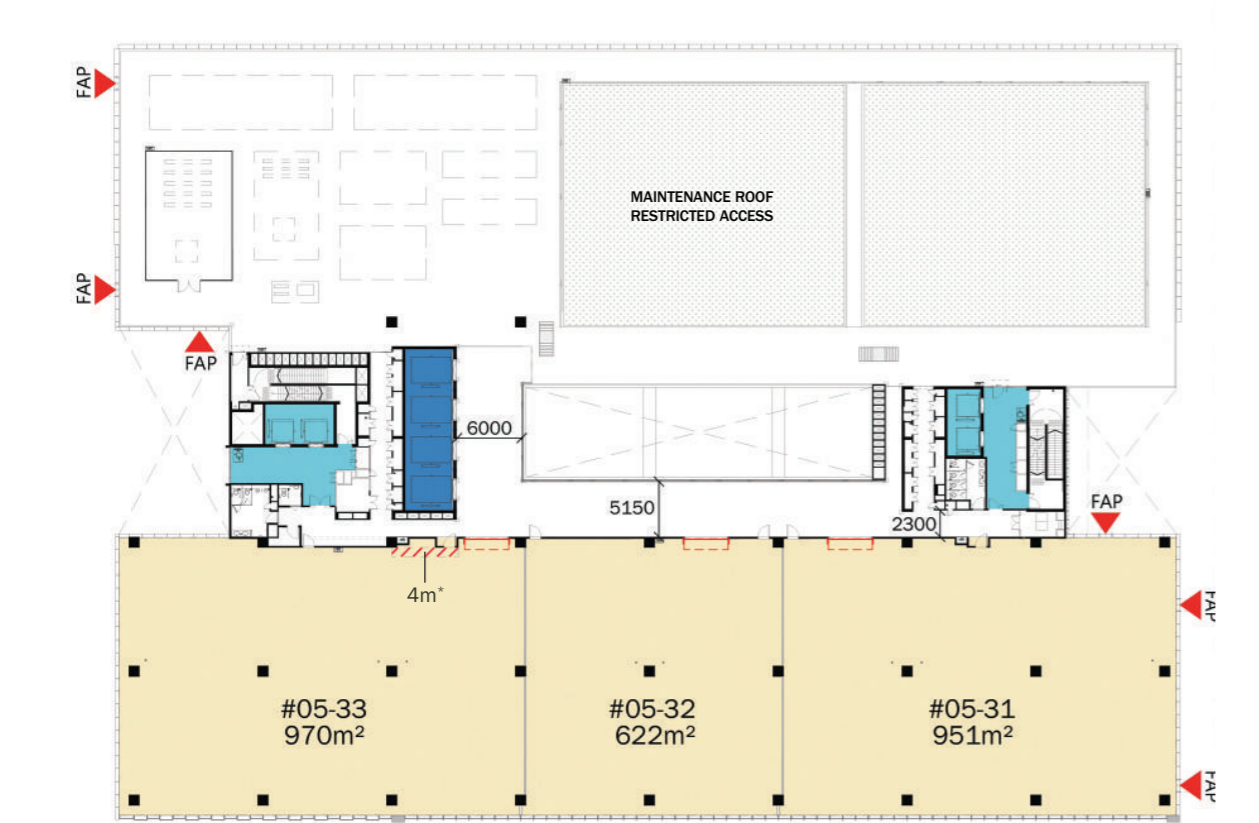


- Factory Units
- Goods Lift Lobby
- Passenger Lift Lobby
- Reduced Headroom Area
- Fire Roller Shutter
- FAP

Fireman Access Panel
- AC Air-Conditioning
- MV Mechanical Ventilation
- Non-structural Intertency Wall

# DETAILED FLOOR PLANS

## LEVEL 5 - TOWER 4



Unit	Electrical Loading	No. of Floor Traps	Ventilation Mode <sup>1</sup>	TOWER 2	TOWER 4
#05-31	300W/m²	3	AC/MV		
#05-32		2			
#05-33		3			

TOWER 1

TOWER 3

\* Clear height : floor finished level to underside of beam

<sup>1</sup> The ventilation system shall be installed by tenants.

The plans are subject to change as may be approved by relevant authorities. All GFA listed are approximate measurements only and are subject to final survey. Localised lower headroom in units with double slab.

Factory Units

Goods Lift Lobby

Passenger Lift Lobby

Reduced Headroom Area

Fire Roller Shutter

Fireman Access Panel

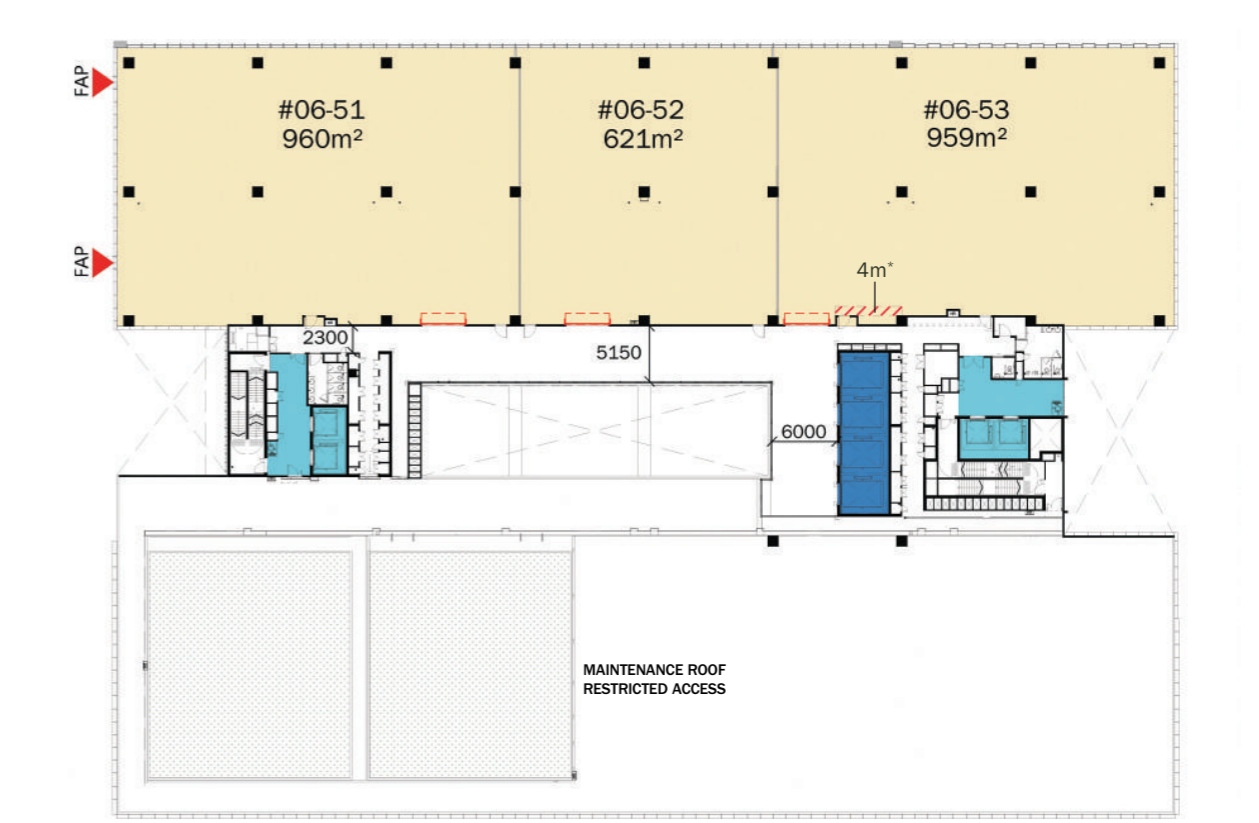
AC Air-Conditioning

MV Mechanical Ventilation

Non-structural Intertency Wall

# DETAILED FLOOR PLANS

## LEVEL 6 - TOWER 1



Unit	Electrical Loading	No. of Floor Traps	Ventilation Mode <sup>1</sup>	TOWER 2	TOWER 4
#06-51	300W/m²	3	AC/MV		
#06-52		2			
#06-53		3			

TOWER 1

TOWER 3

\* Clear height : floor finished level to underside of beam

<sup>1</sup> The ventilation system shall be installed by tenants.

The plans are subject to change as may be approved by relevant authorities. All GFA listed are approximate measurements only and are subject to final survey. Localised lower headroom in units with double slab.

Factory Units

Goods Lift Lobby

Passenger Lift Lobby

Reduced Headroom Area

Fire Roller Shutter

Fireman Access Panel

AC Air-Conditioning

MV Mechanical Ventilation

Non-structural Intertency Wall

# DETAILED FLOOR PLANS

## LEVEL 6 - TOWER 2



\* Clear height : floor finished level to underside of beam

<sup>1</sup> The ventilation system shall be installed by tenants.

The plans are subject to change as may be approved by relevant authorities. All GFA listed are approximate measurements only and are subject to final survey. Localised lower headroom in units with double slab.



Factory Units

Goods Lift Lobby

Passenger Lift Lobby

Reduced Headroom Area

Fire Roller Shutter

FAP

Fireman Access Panel

AC Air-Conditioning

MV Mechanical Ventilation

Non-structural Intertency Wall



Secure your space in Bulim Square today and advance your manufacturing business towards Industry 4.0.

# BULIM SQUARE

MANUFACTURING  
REIMAGINED



All renderings/images shown are for illustration purposes only and does not necessarily depict the finished state of the property.



**BUILDING INDUSTRIES**